



Indurabond

ALUMINIUM COMPOSITE PANELS

# Route & Return System

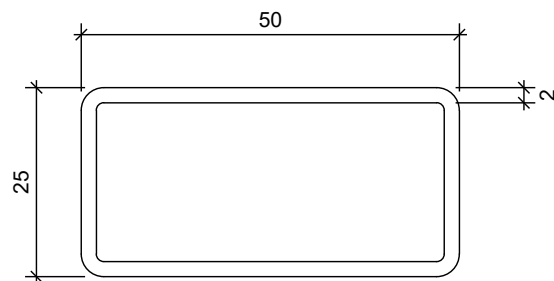
Version 2.0  
Nov 2025

# CONTENTS

1. Components	4
2. Vertical Panel Joint	5
3. Horizontal Panel Joint	6
4. Inter-Storey Joint	7
5. Internal Panel Corner	8
6. External Panel Corner	9
7. Wall To Soffit - A	10
8. Wall To Soffit - B	11
9. Base Detail - A	12
10. Base Detail - B	13
11. Precast Wall - A	14
12. Precast Wall - B	15
13. Fibre Cement Internal Corner - A	16
14. Fibre Cement Internal Corner - B	17
15. Vertical Profiled Cladding Internal Corner	18
16. Horizontal Profiled Cladding Internal Corner	19
17. Pipe Penetration @ Soffit	20
18. Vertical Profiled Metal Junction	21
19. Parapet Option - A	22
20. Parapet Option - B	23
21. Parapet Option - C (w/ minimal upstand)	24
22. Parapet Top Joint	25
23. Fascia To Soffit - A	26

# CONTENTS

24. Fascia To Soffit - B	27
25. Fascia To Soffit - C	28
26. Fascia To Soffit - D	29
27. Eyebrow Sill Detail	30
28. Typical Upstand Detail	31
29. Typical Commercial Window Head	32
30. Typical Commercial Window Sill	33
31. Typical Commercial Window Jamb	34
32. Typical Residential Window Head	35
33. Typical Residential Window Sill	36
34. Typical Residential Window Jamb	37
35. Wall Box Penetration Detail	38
36. Wall Pipe Penetration Detail	39
37. Fin Mounting Detail	40
38. General Differential Movement	41
39. Meter Box Penetration	42
40. Aluminium Stiffener Connection	43



**RHS Stiffener 50X25X2mm**

Alloy & Temper: 6060-T6

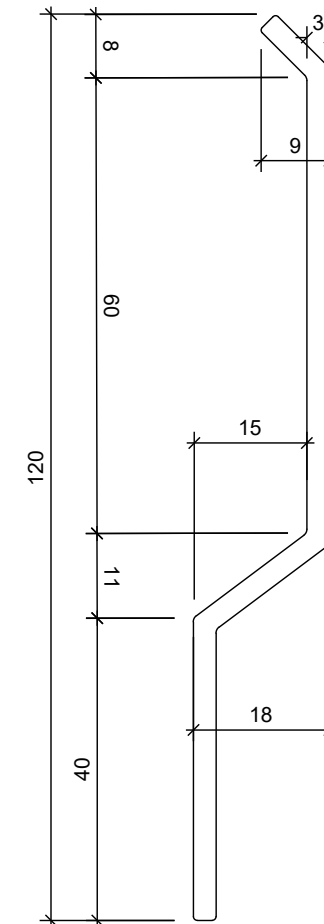
Colour: Mill Finish

Adhesive Glue: Minimum 2mm thick & minimum 50mm wide strip of Sabrebond SMP60

Alignment: Stiffener to be parallel to short edge

**Fire Cavity Barrier (By Others)**

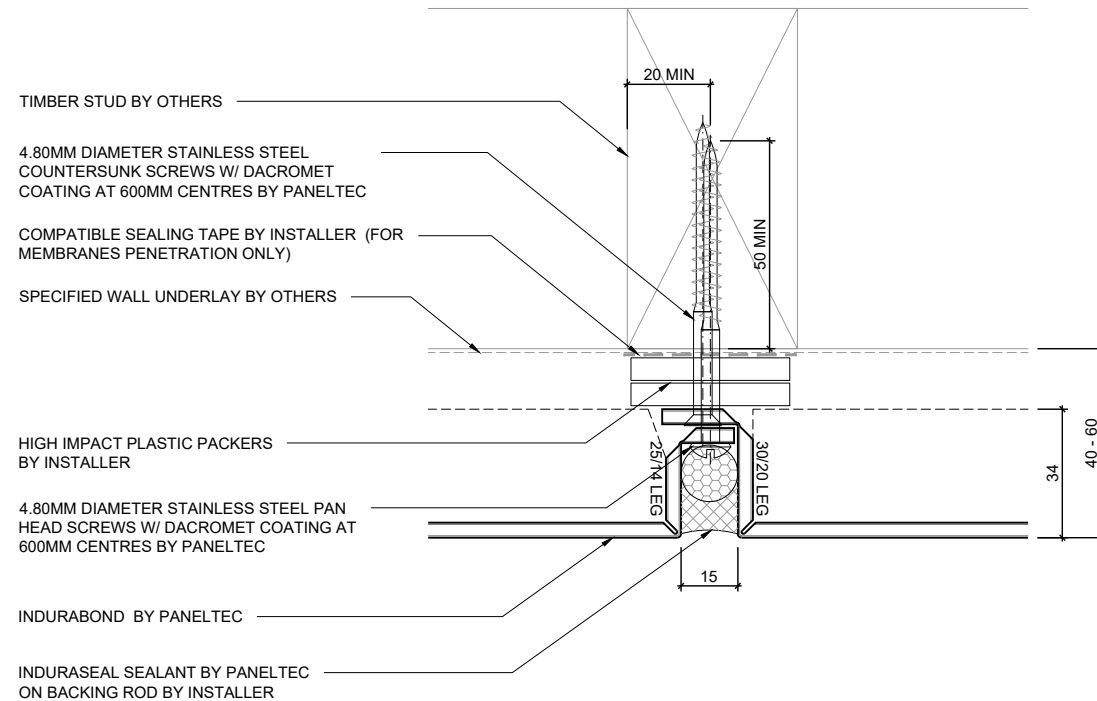
- Ryanfire Intuspan Fire Cavity Barrier or equivalent, where required, to be installed in accordance with C/AS2

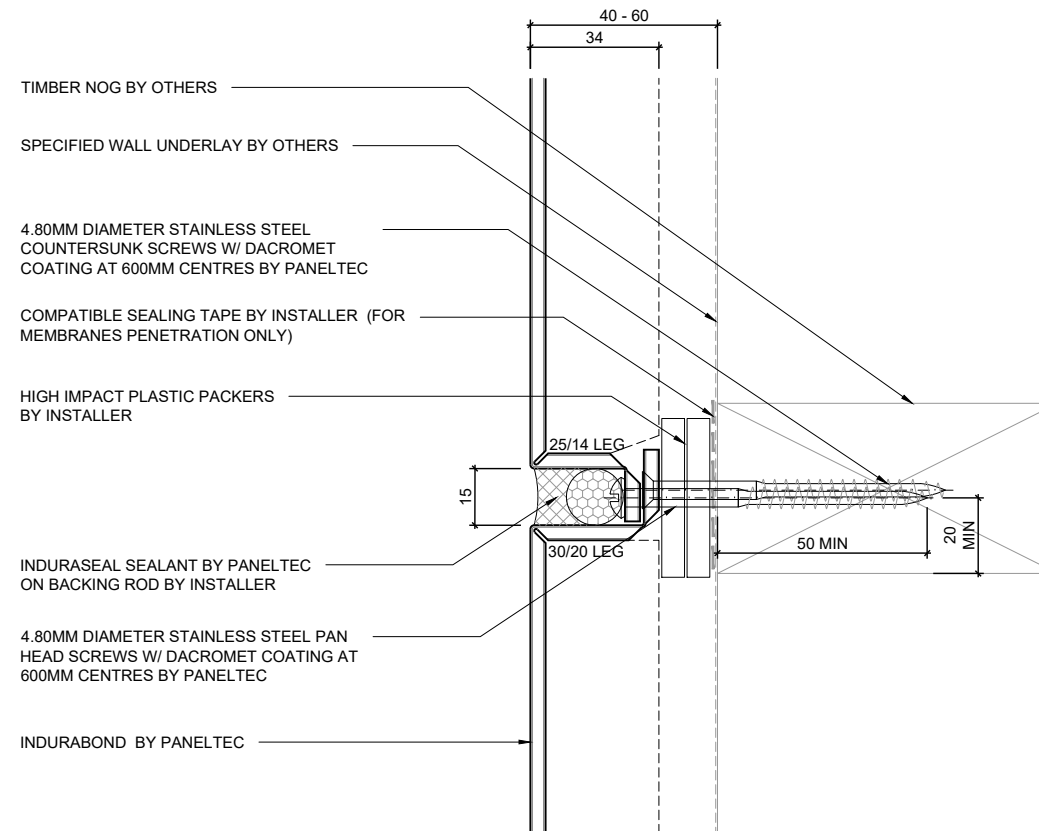


**Indurabase Extrusion**

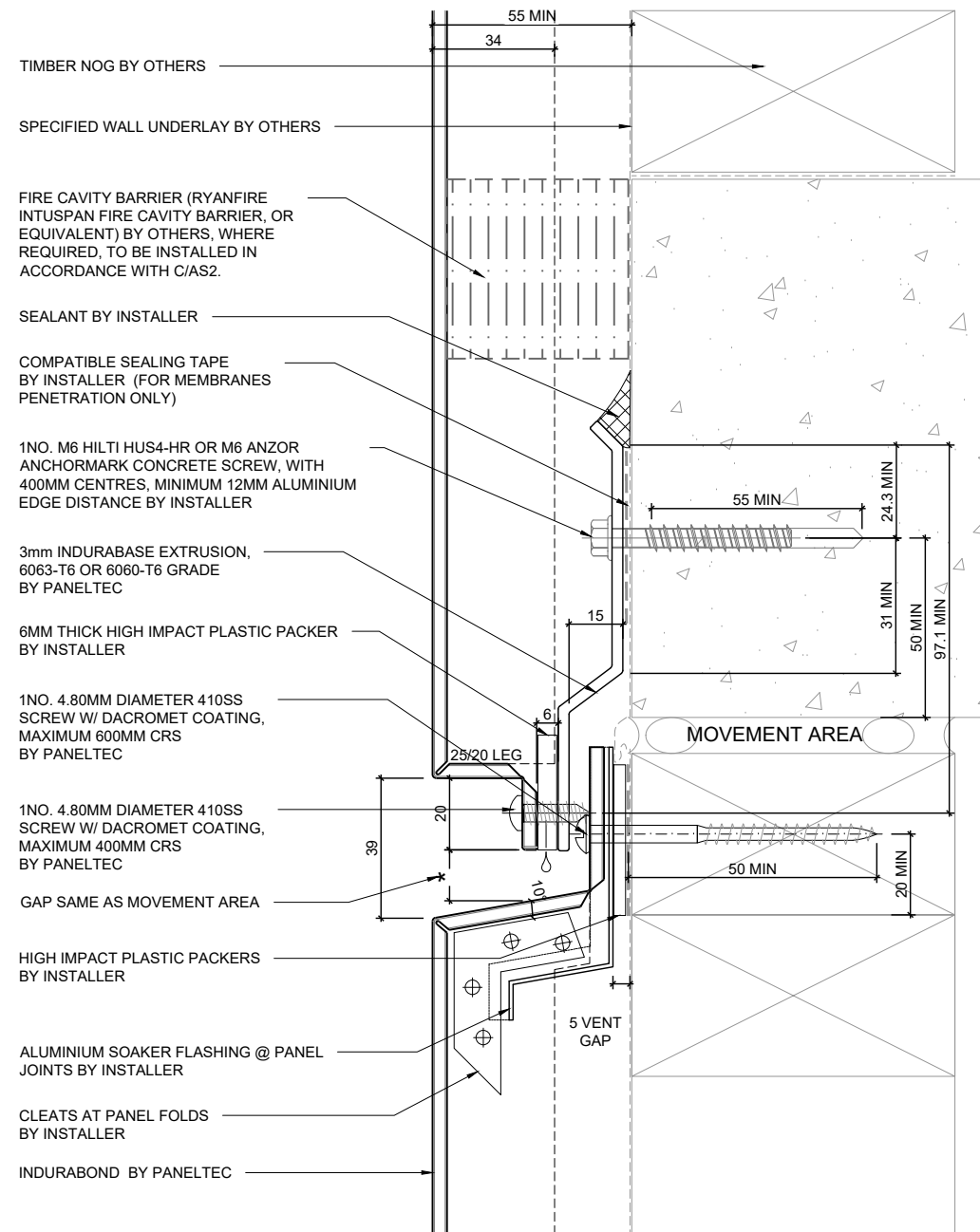
Alloy & Temper: 6060-T6

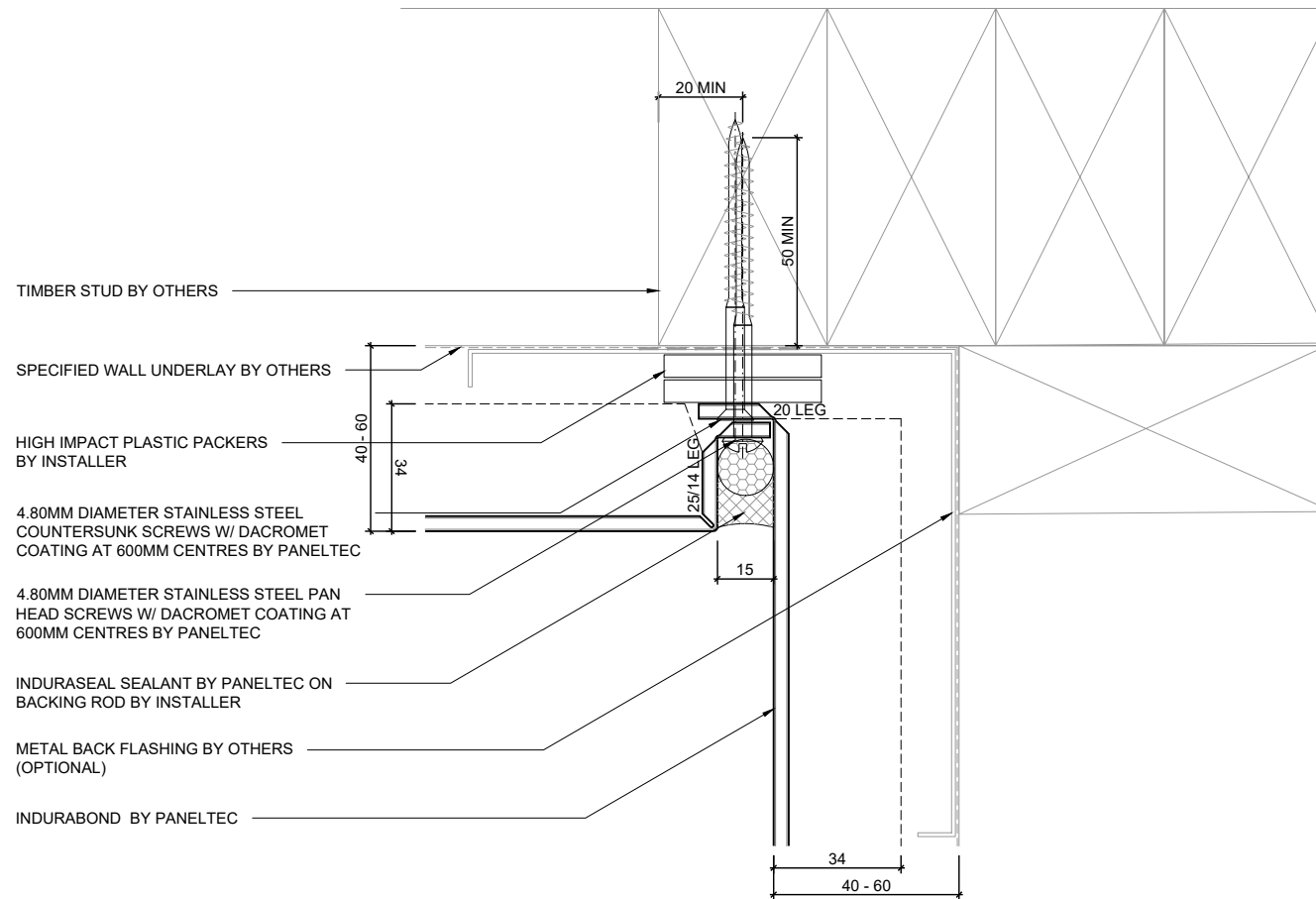
Colour: Mill Finish



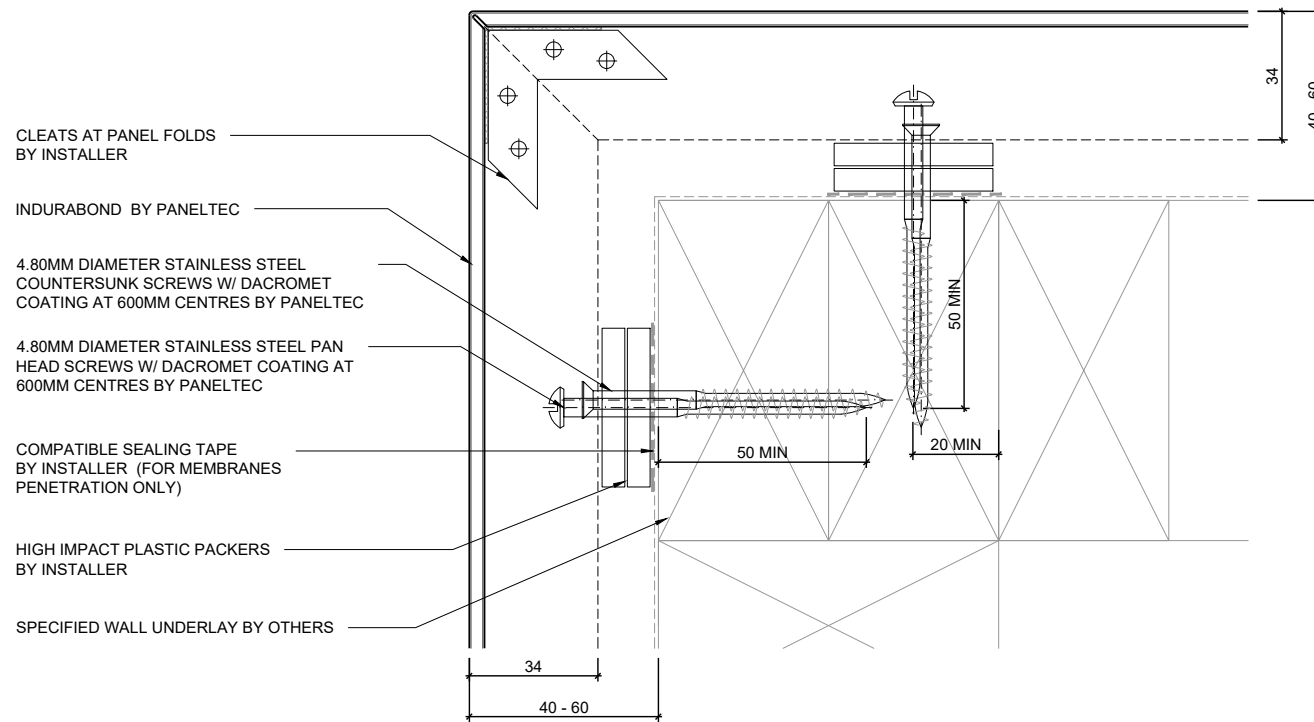


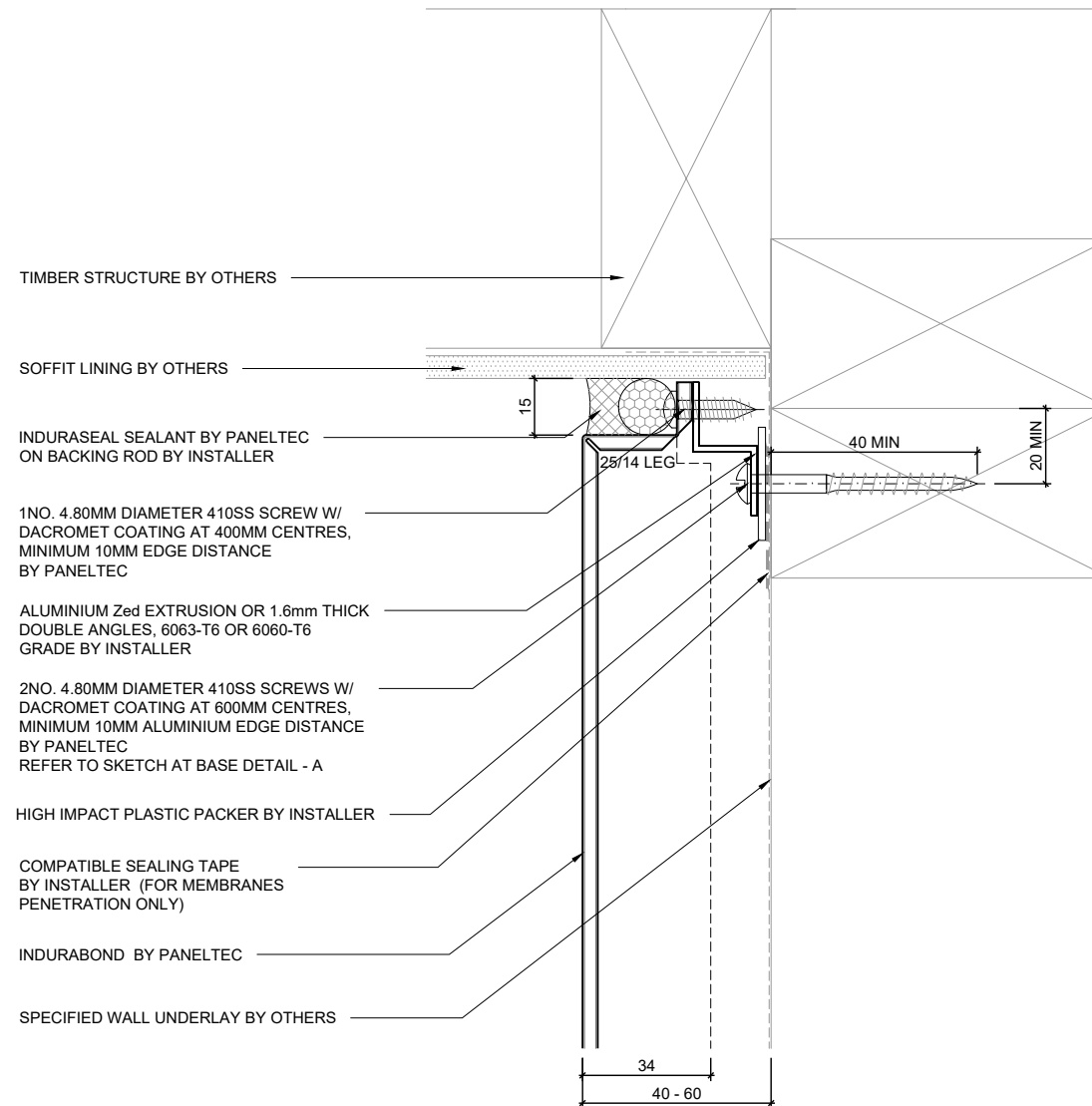


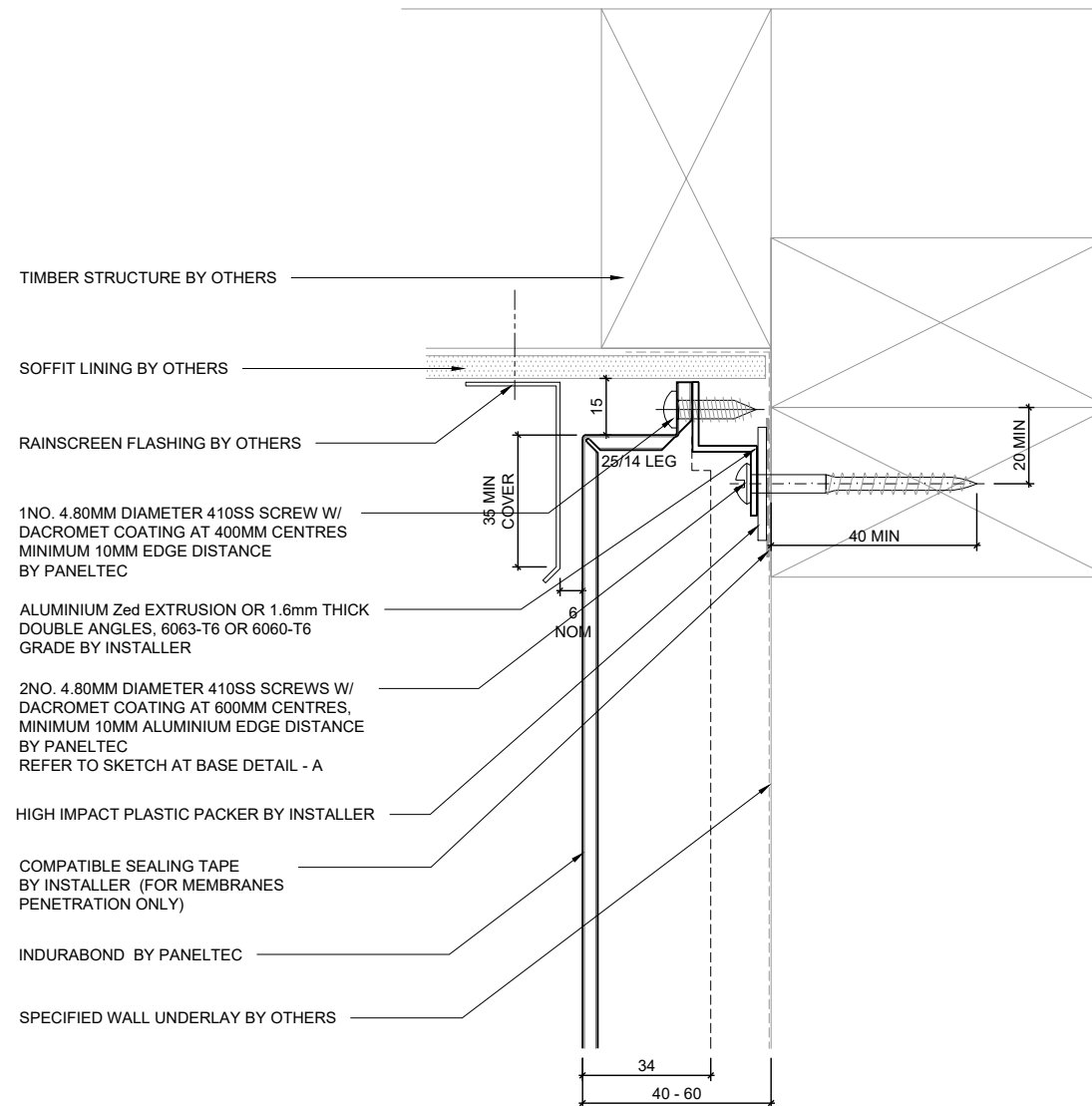


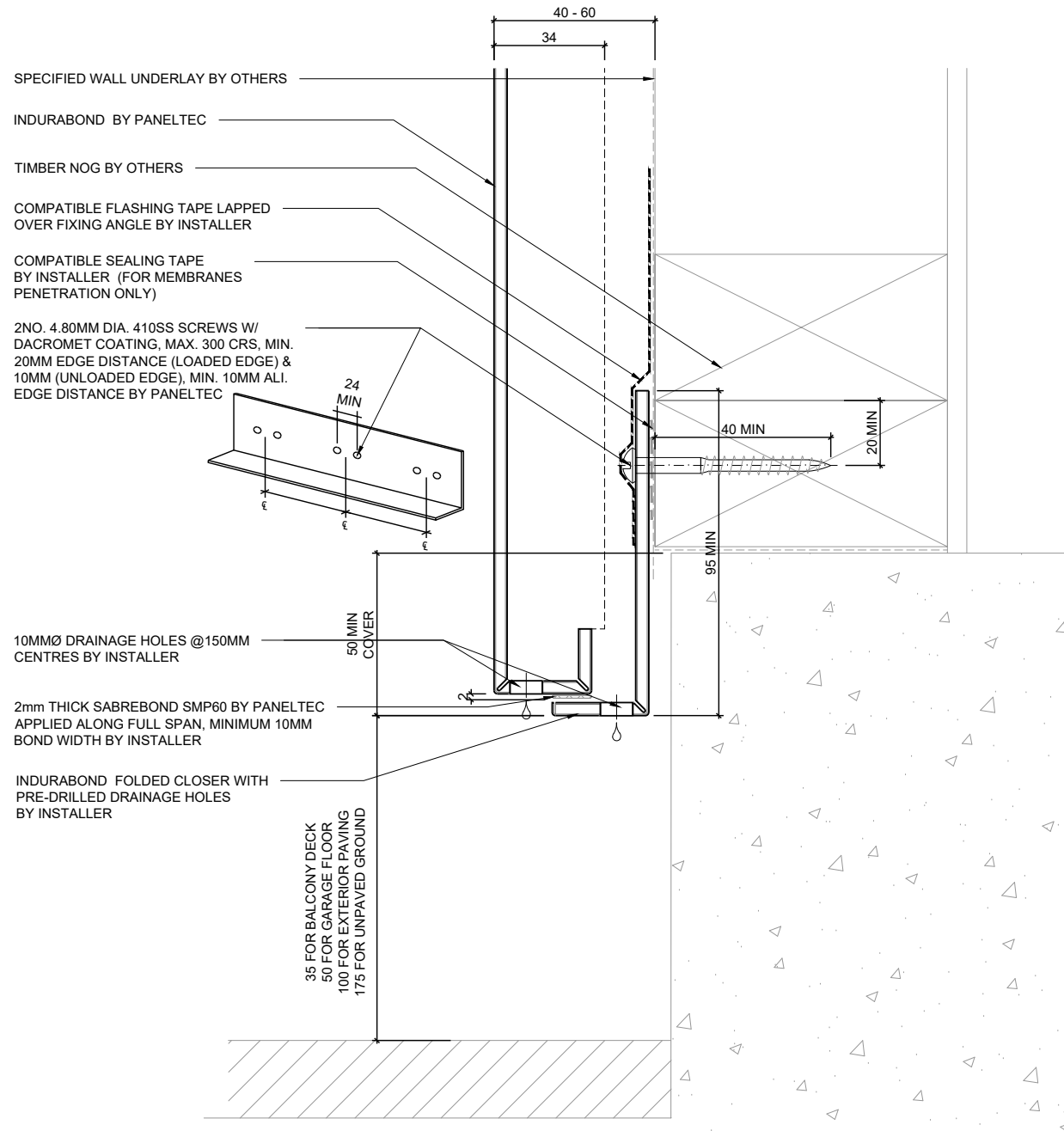


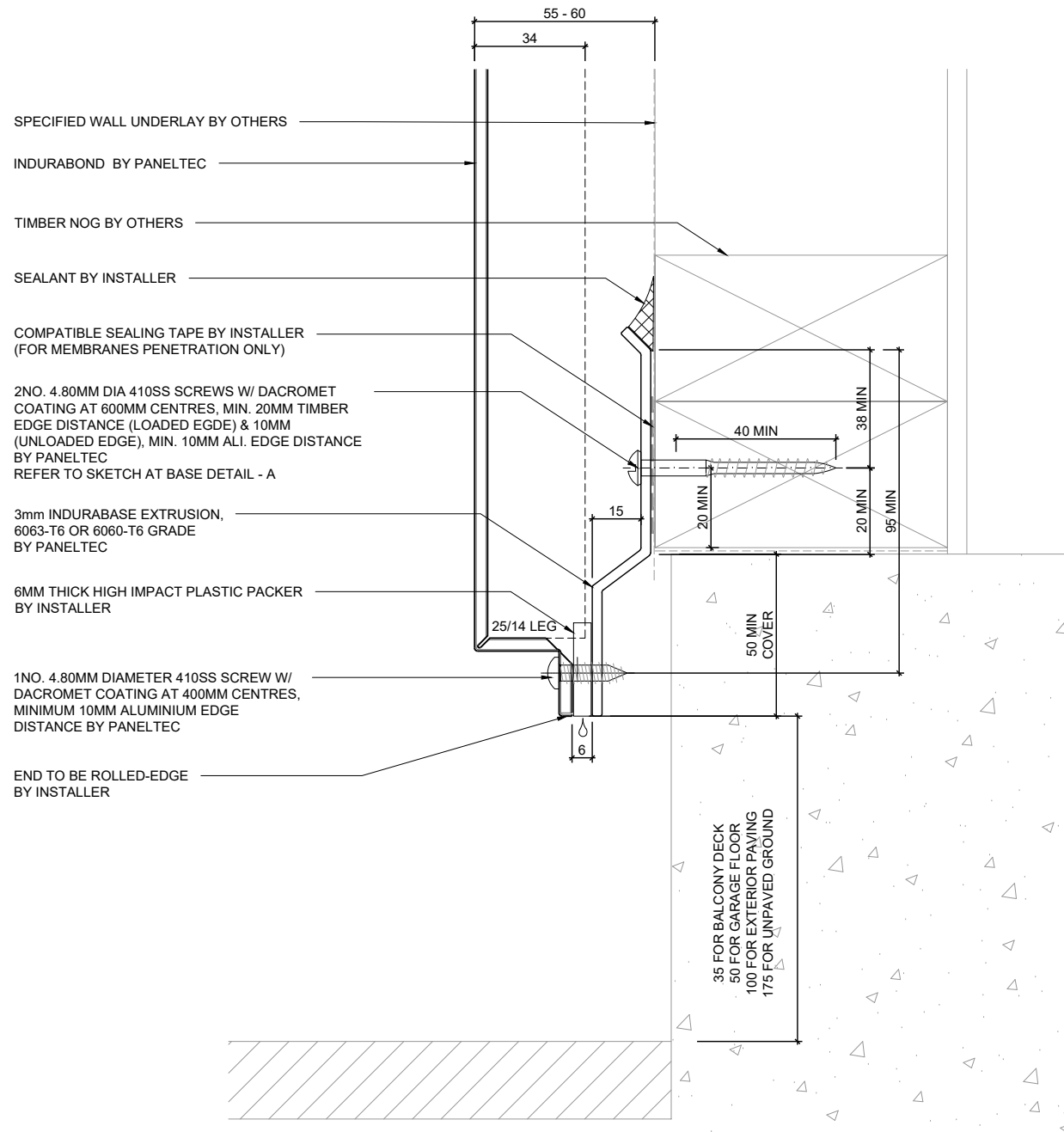


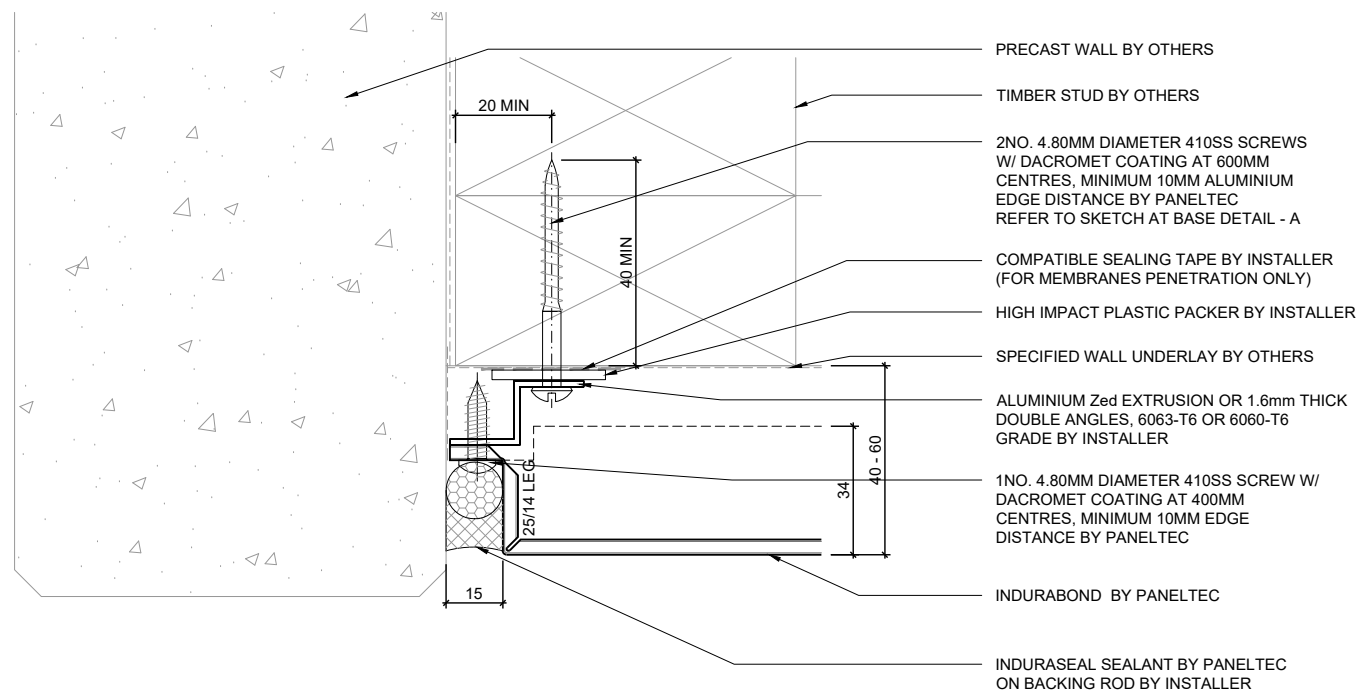


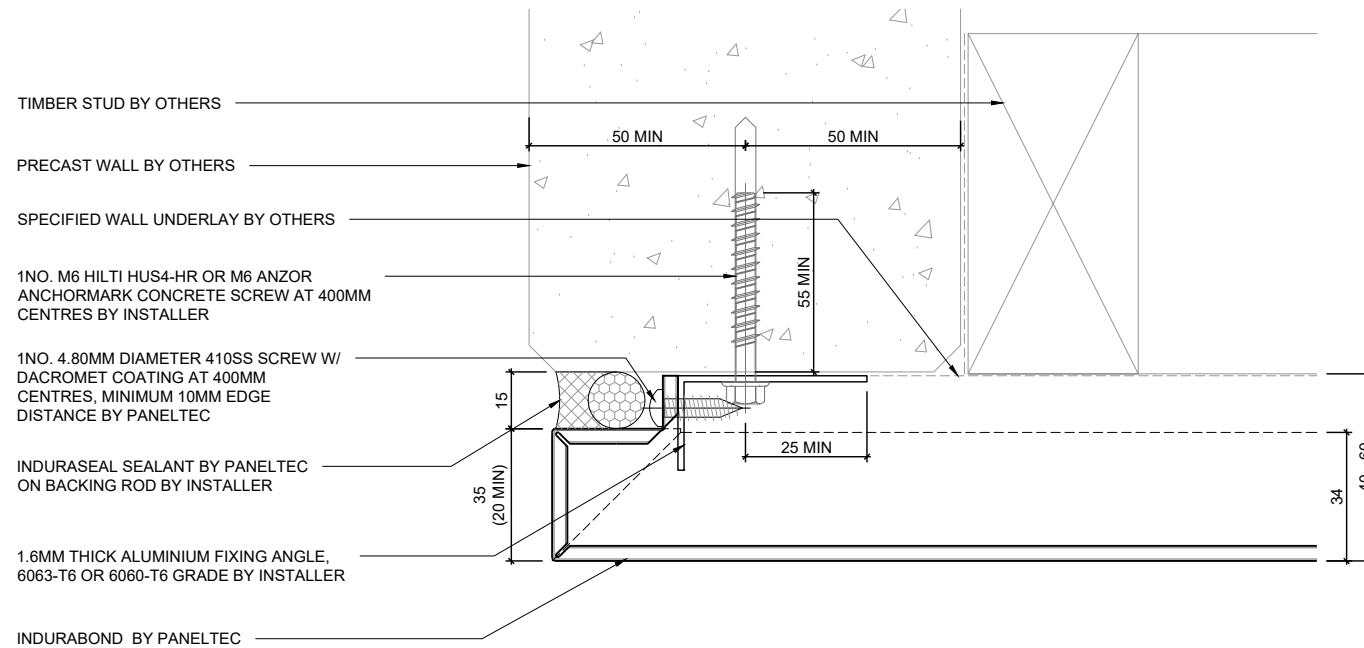




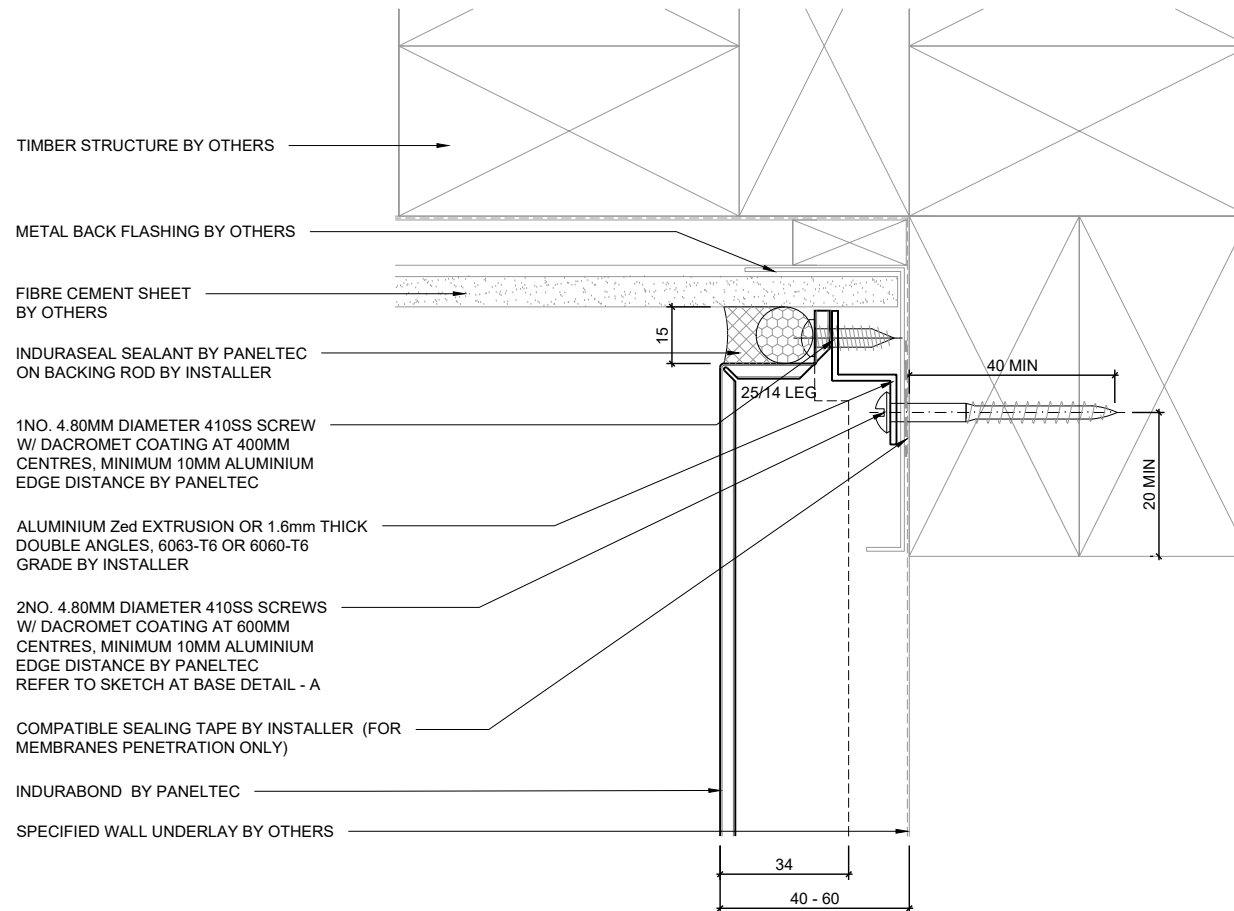


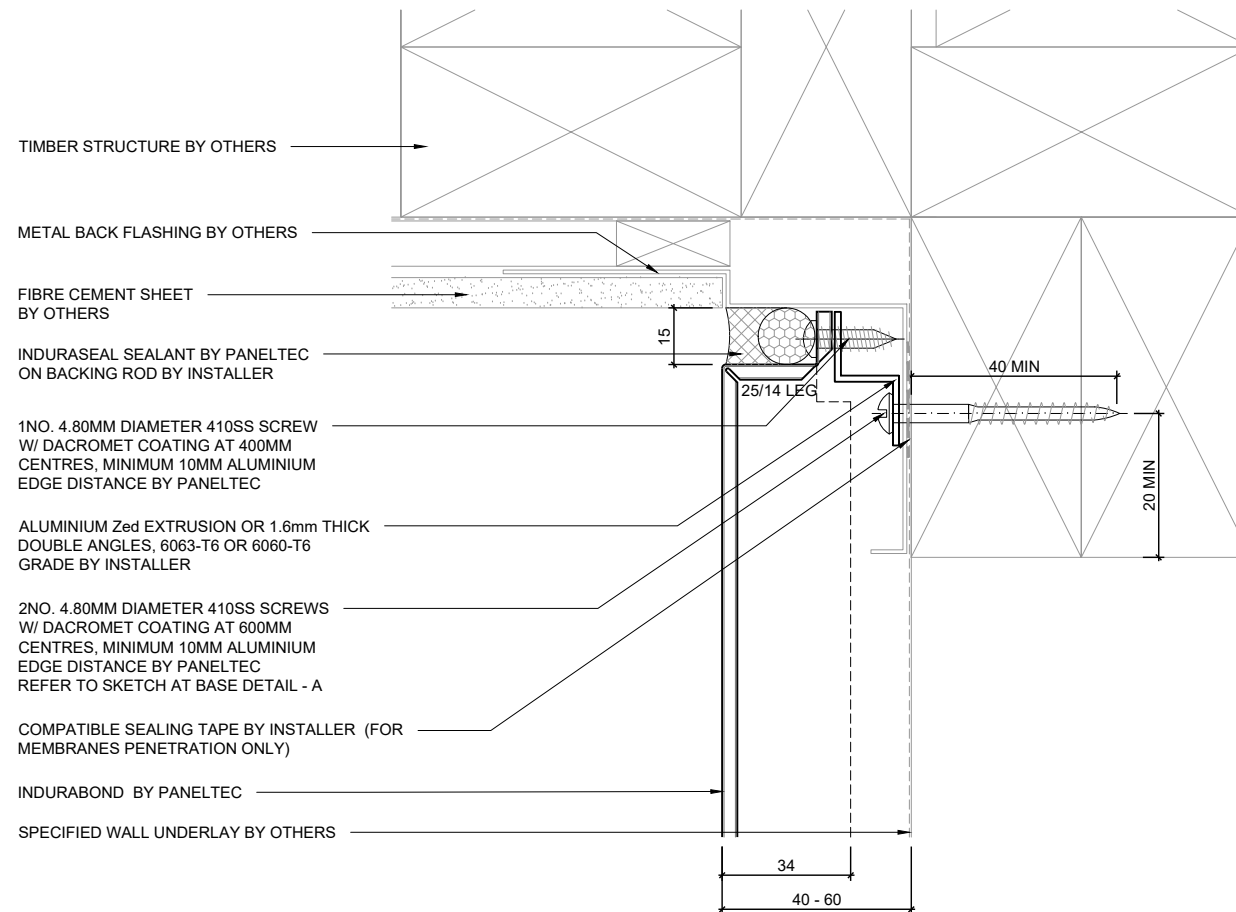


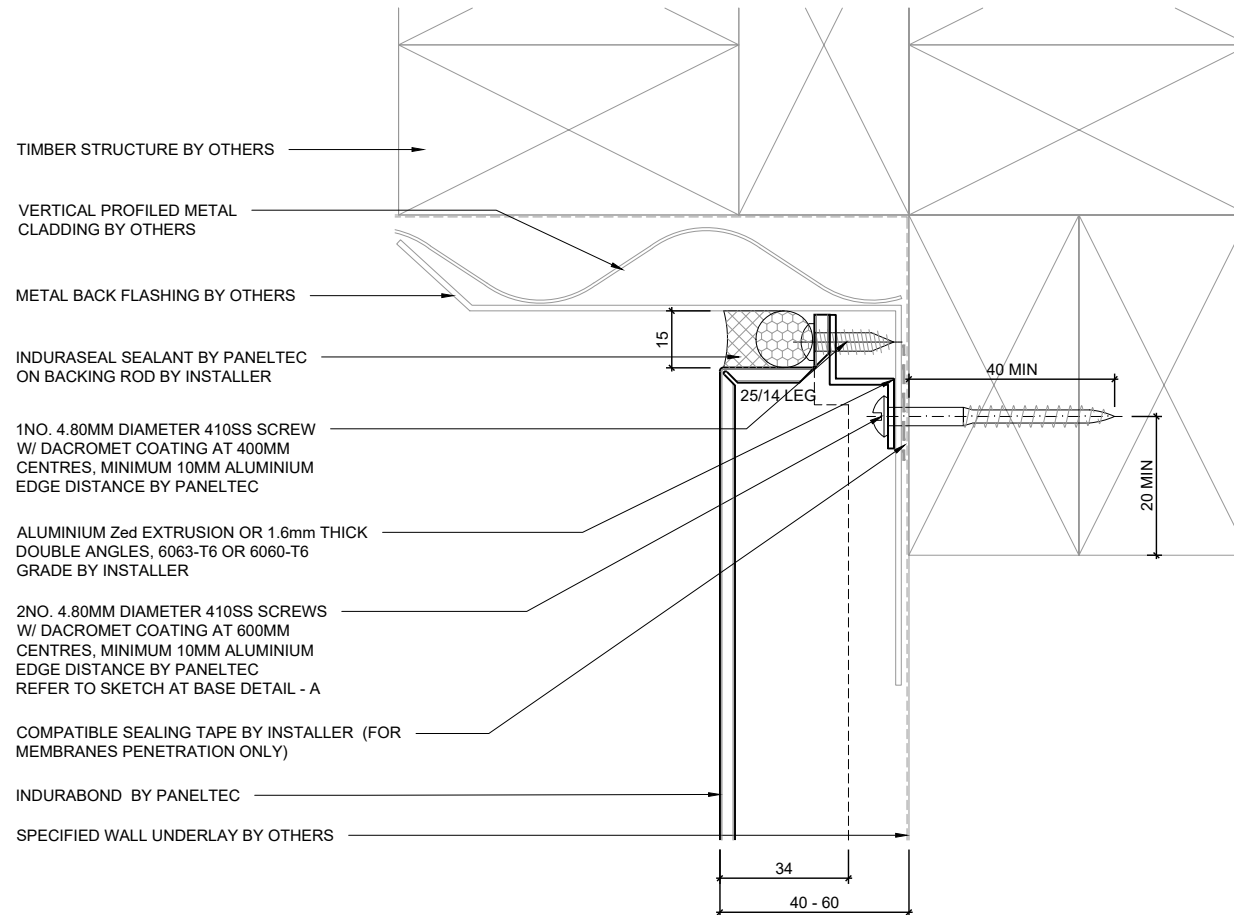


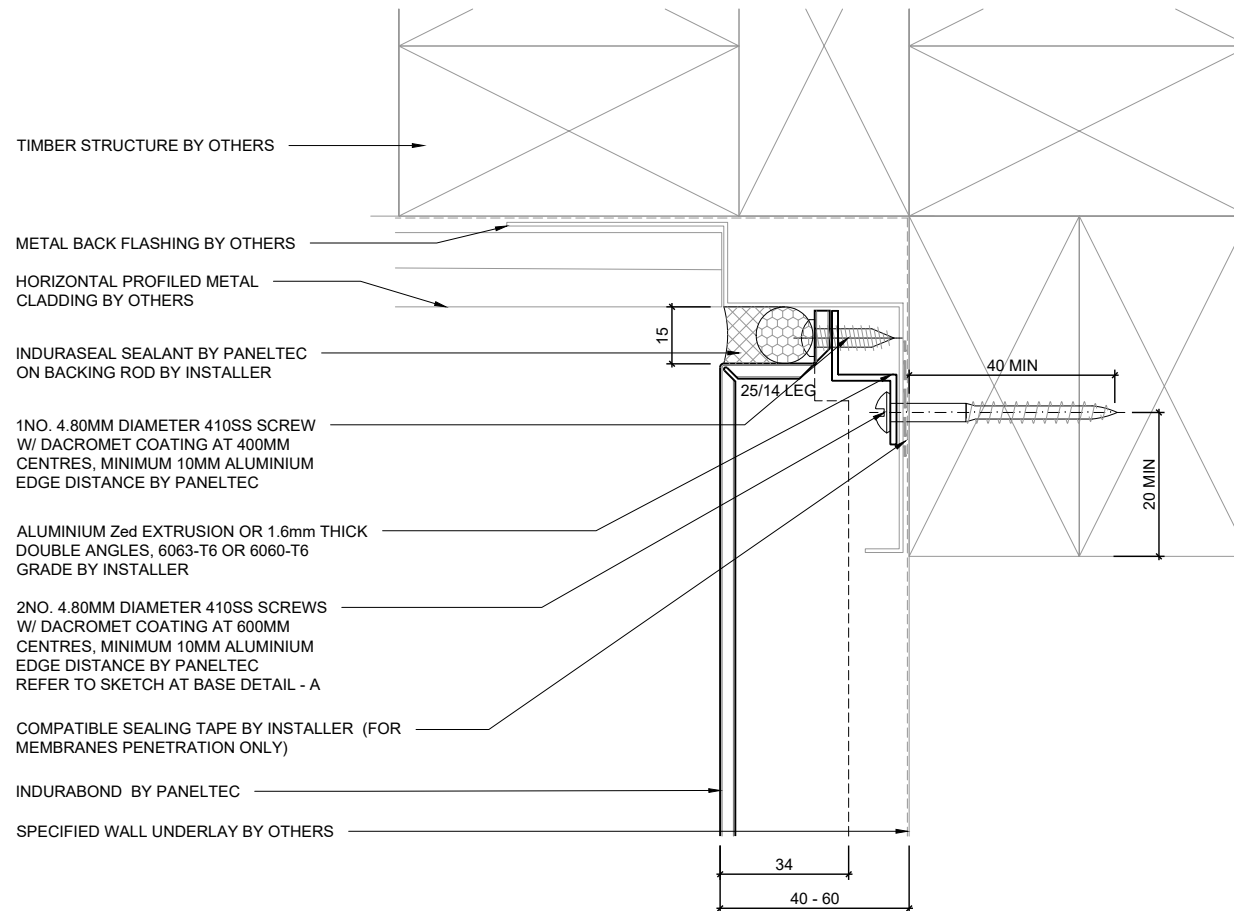


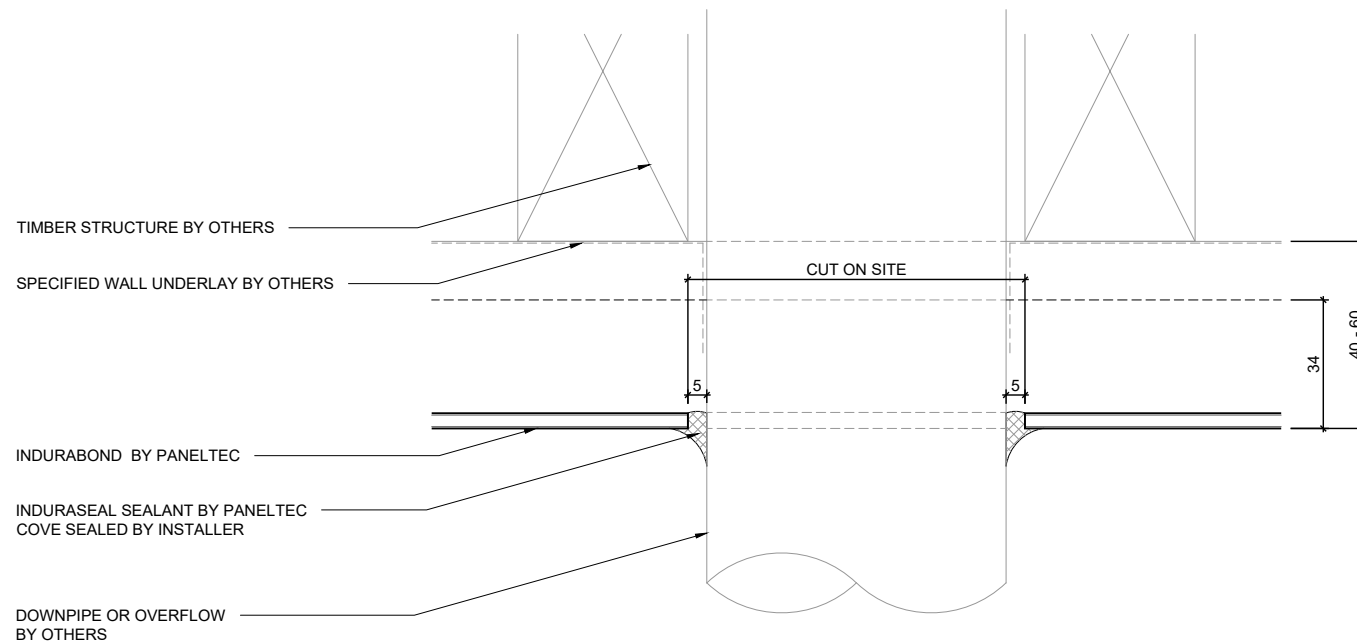


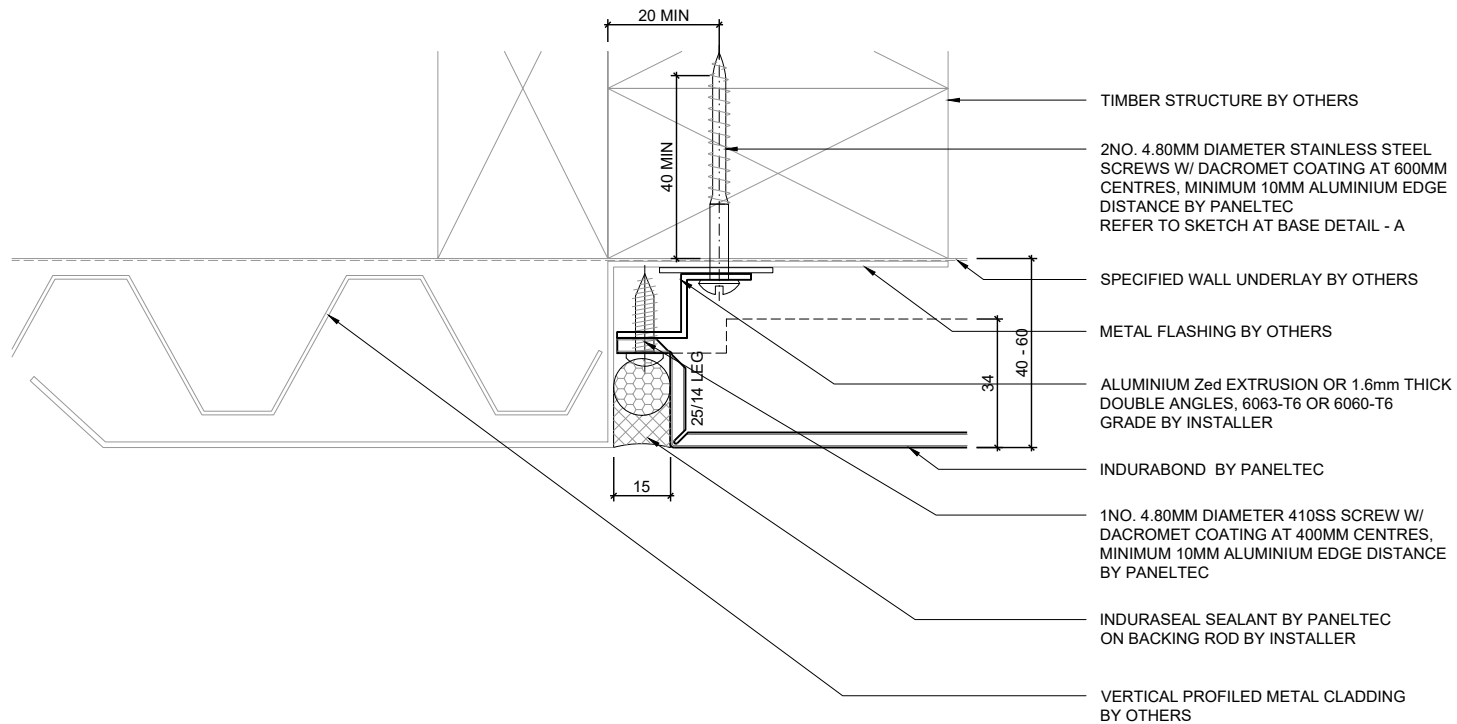


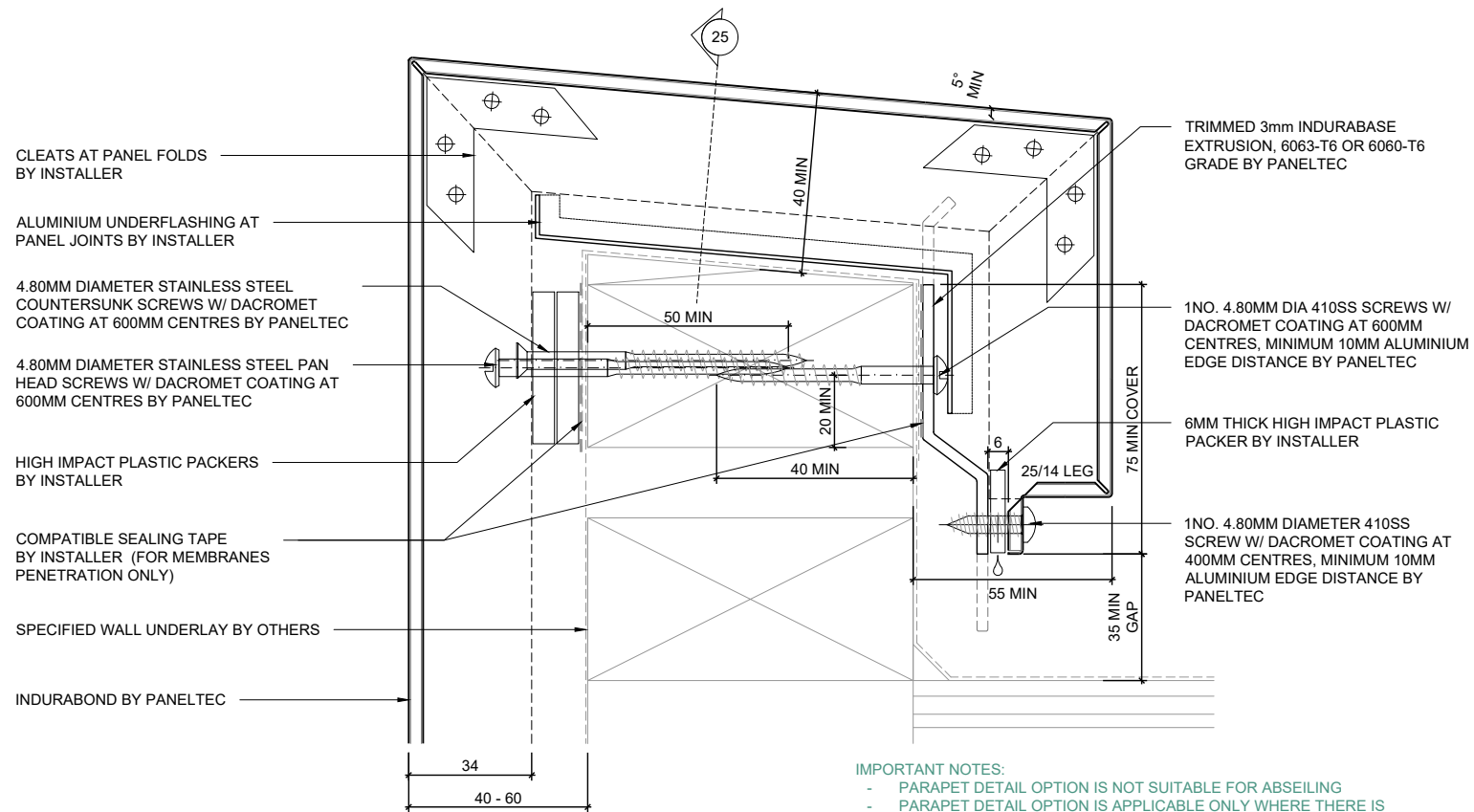




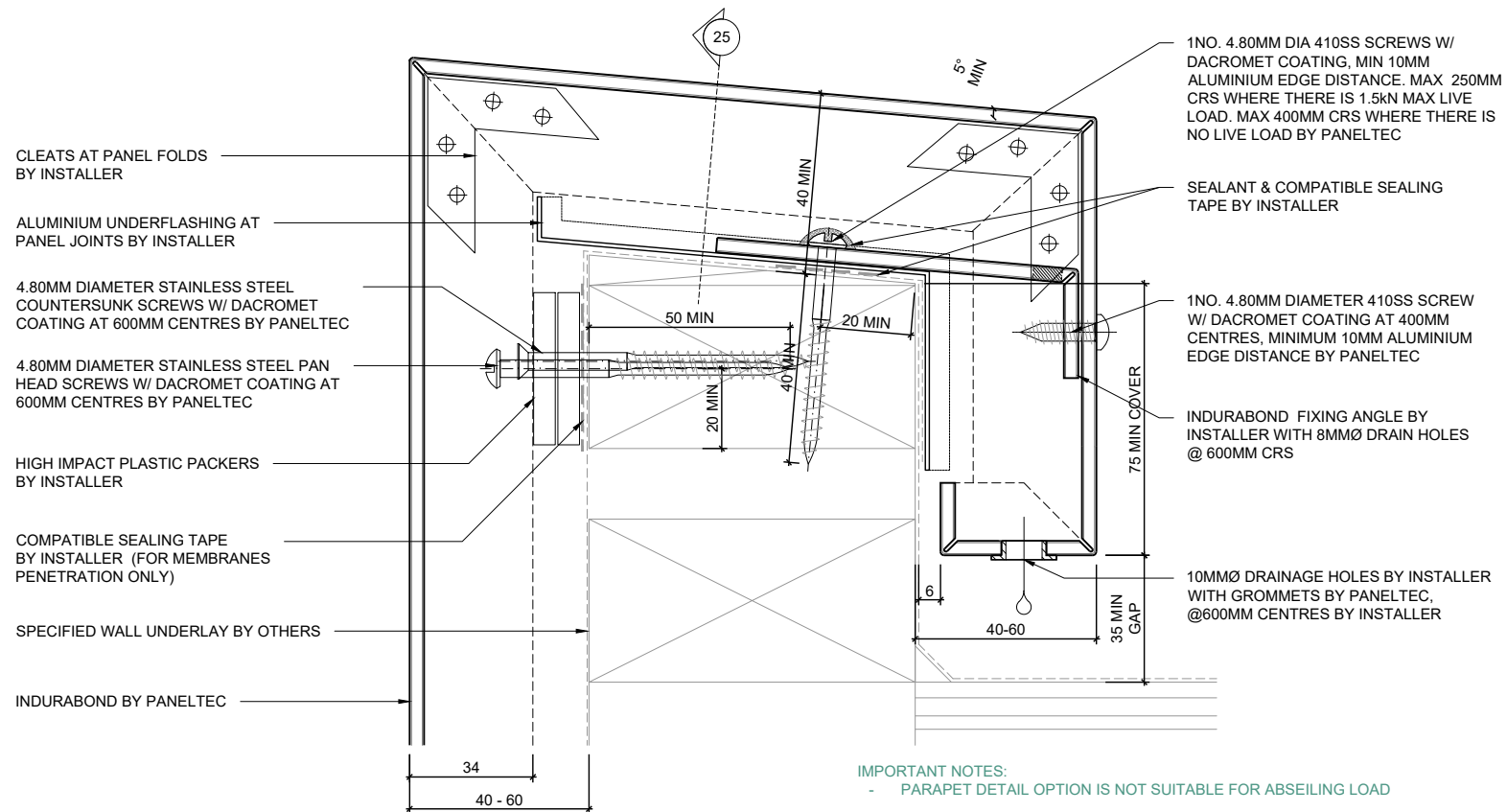


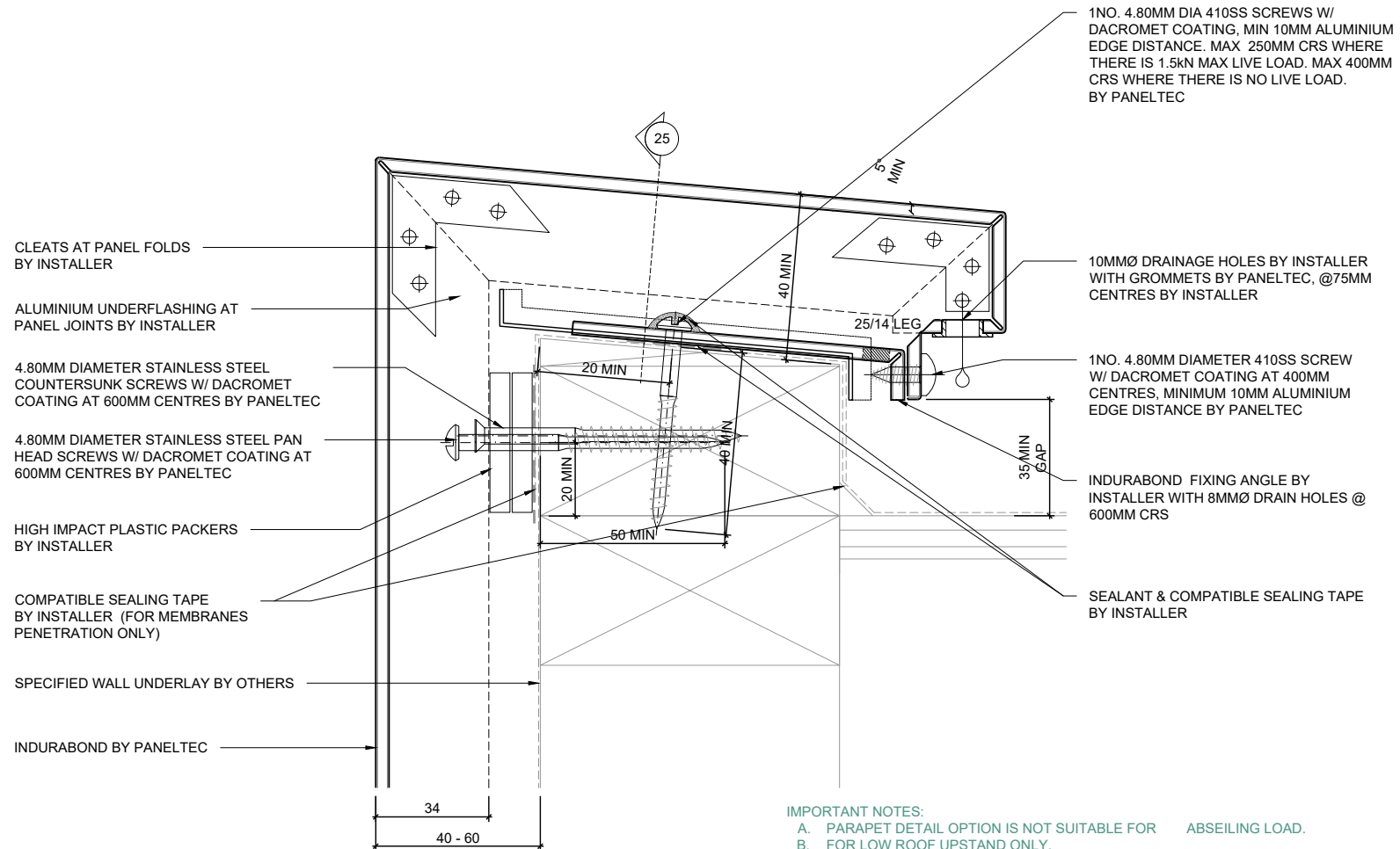






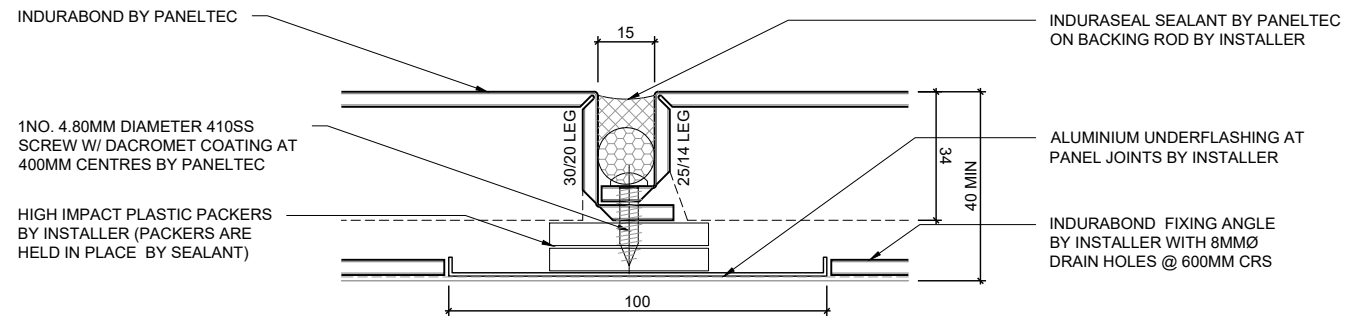


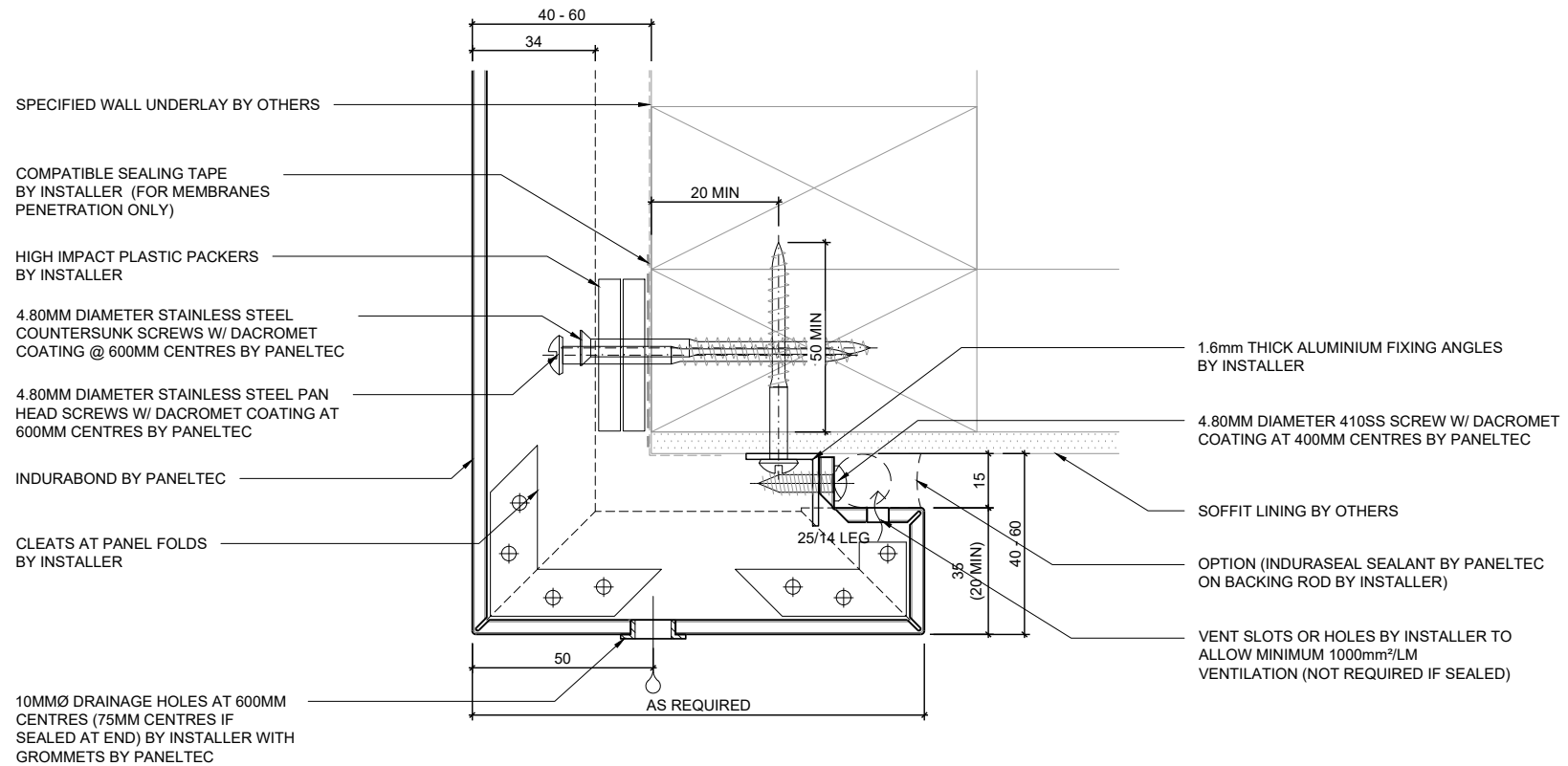




## IMPORTANT NOTES:

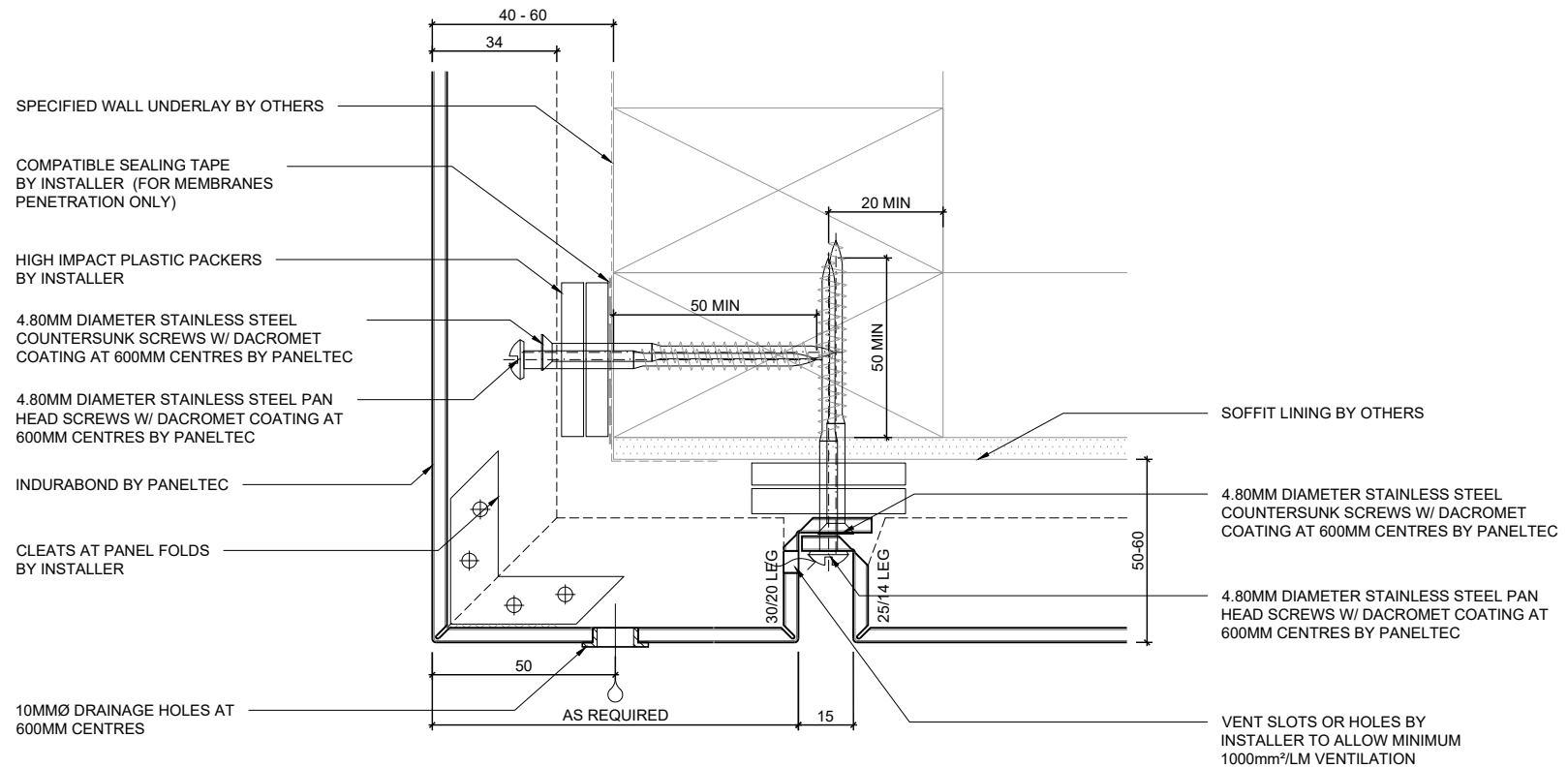
- PARAPET DETAIL OPTION IS NOT SUITABLE FOR ABSEILING LOAD.
- FOR LOW ROOF UPSTAND ONLY.
- THIS DETAIL DOES NOT COMPLY WITH THE BUILDING CODE REQUIREMENTS BUT MAY BE CONSIDERED AN ACCEPTABLE ALTERNATIVE SOLUTION.
- IT IS THE RESPONSIBILITY OF THE BUILDER OR ARCHITECT TO ENSURE THAT THIS DETAIL IS SATISFACTORY. SPECIFIC INSTRUCTIONS ARE REQUIRED FOR ITS IMPLEMENTATION.





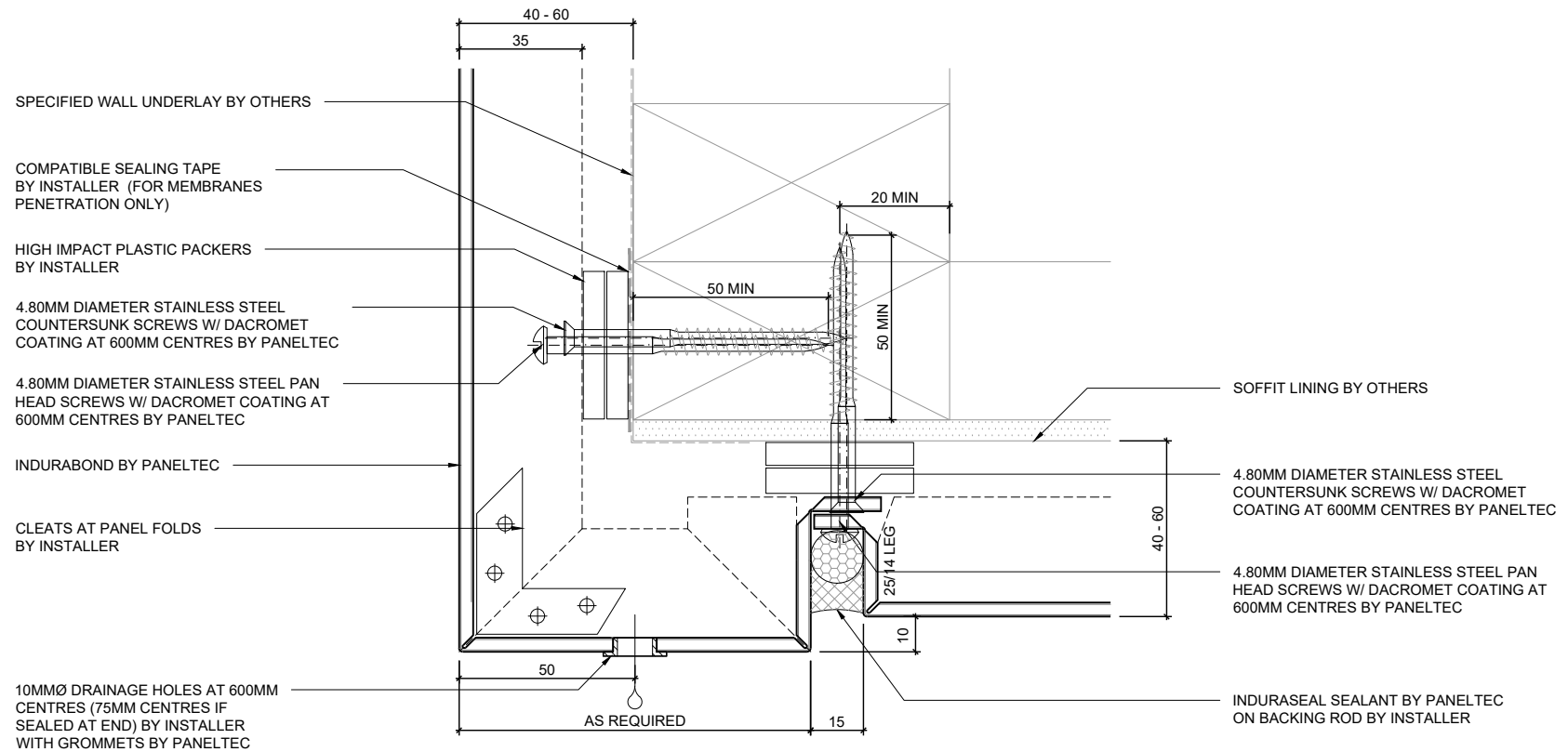
**IMPORTANT NOTES:**

- RECOMMENDED TO HAVE THE PANEL BOTTOM SLOPING @1.5° TOWARDS THE SIDE WHERE THE DRAIN HOLE IS LOCATED TO AVOID RISK OF PONDING.



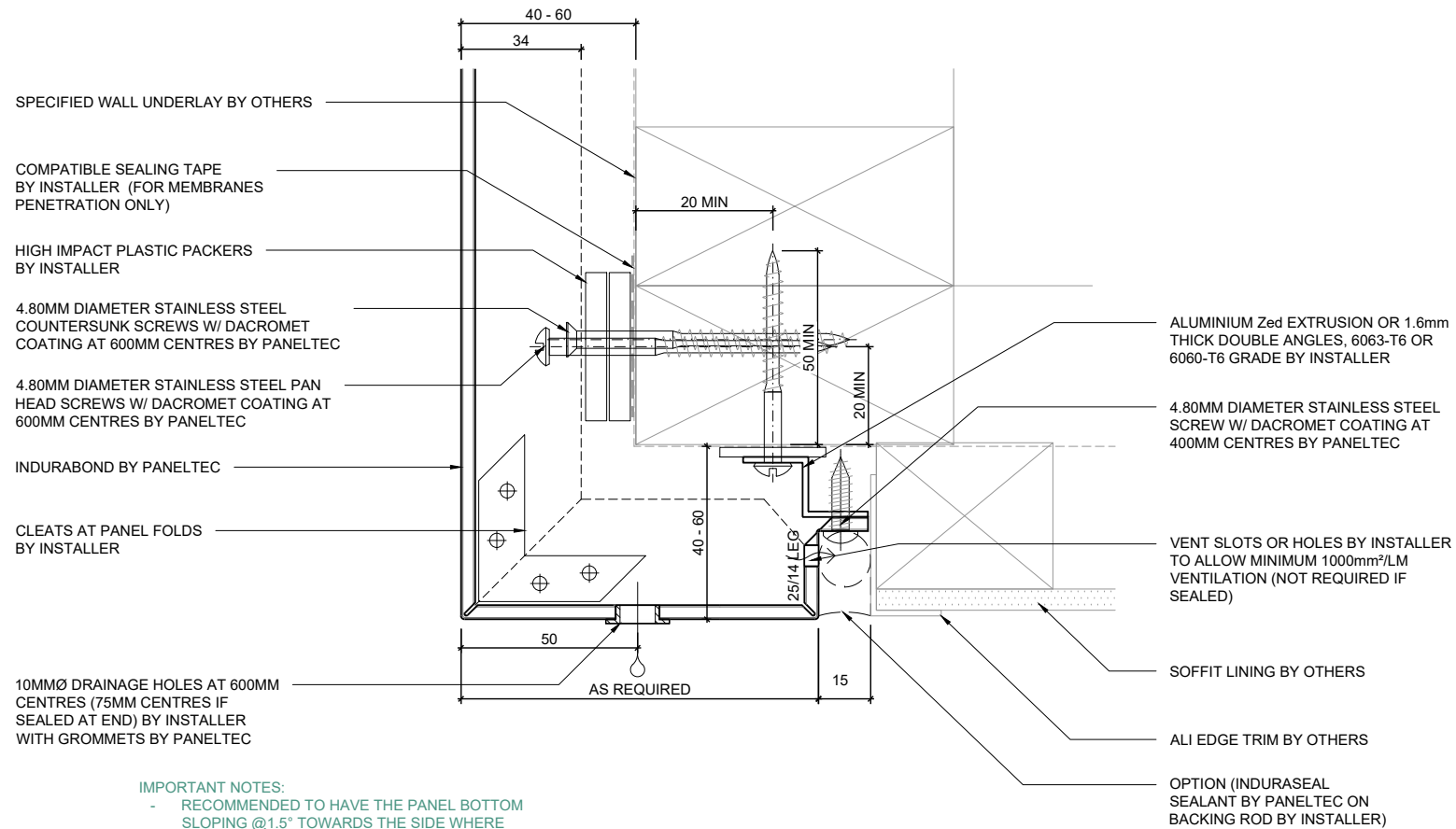
**IMPORTANT NOTES:**

- RECOMMENDED TO HAVE THE PANEL BOTTOM SLOPING @1.5° TOWARDS THE SIDE WHERE THE DRAIN HOLE IS LOCATED TO AVOID RISK OF PONDING.

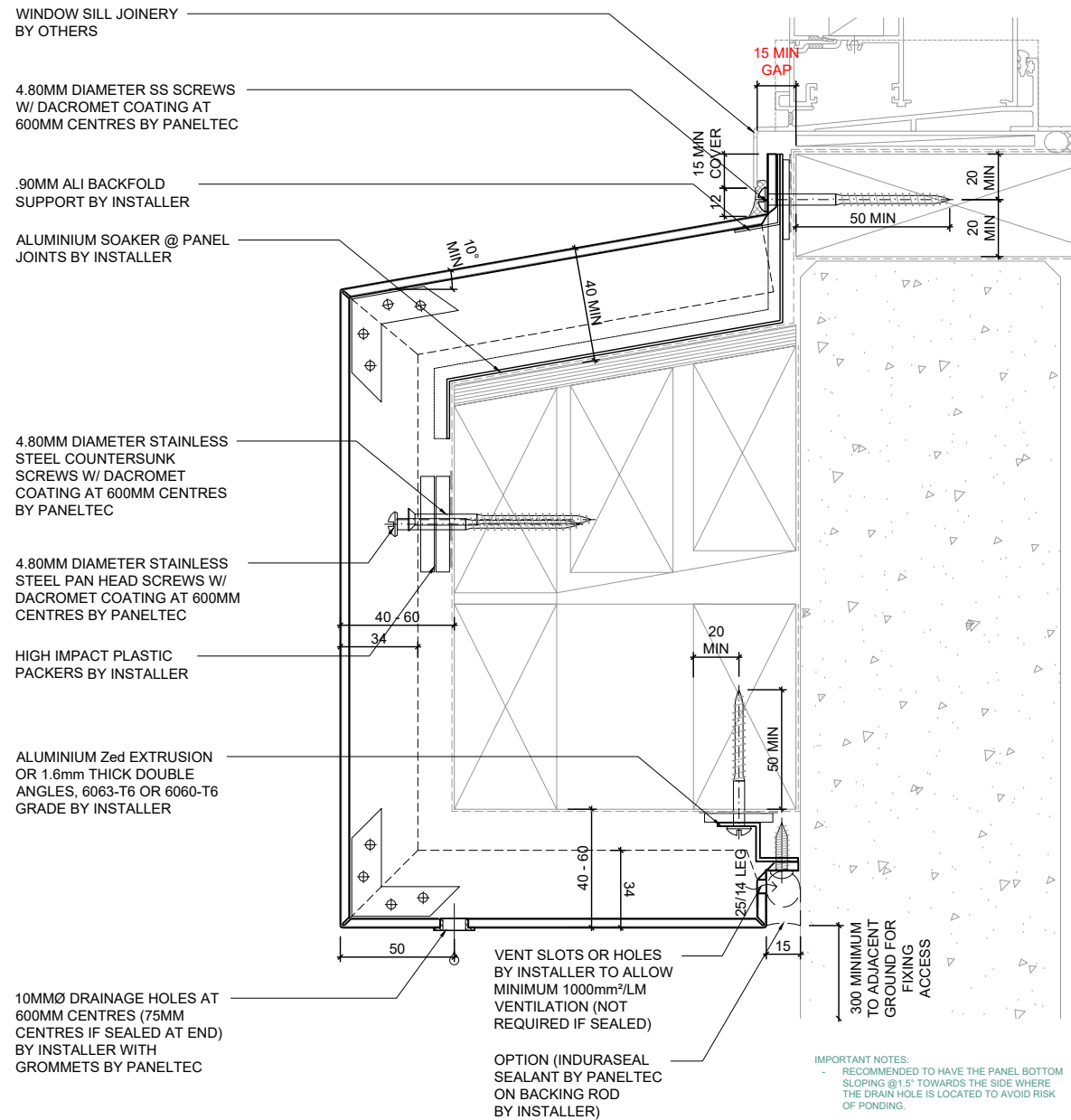


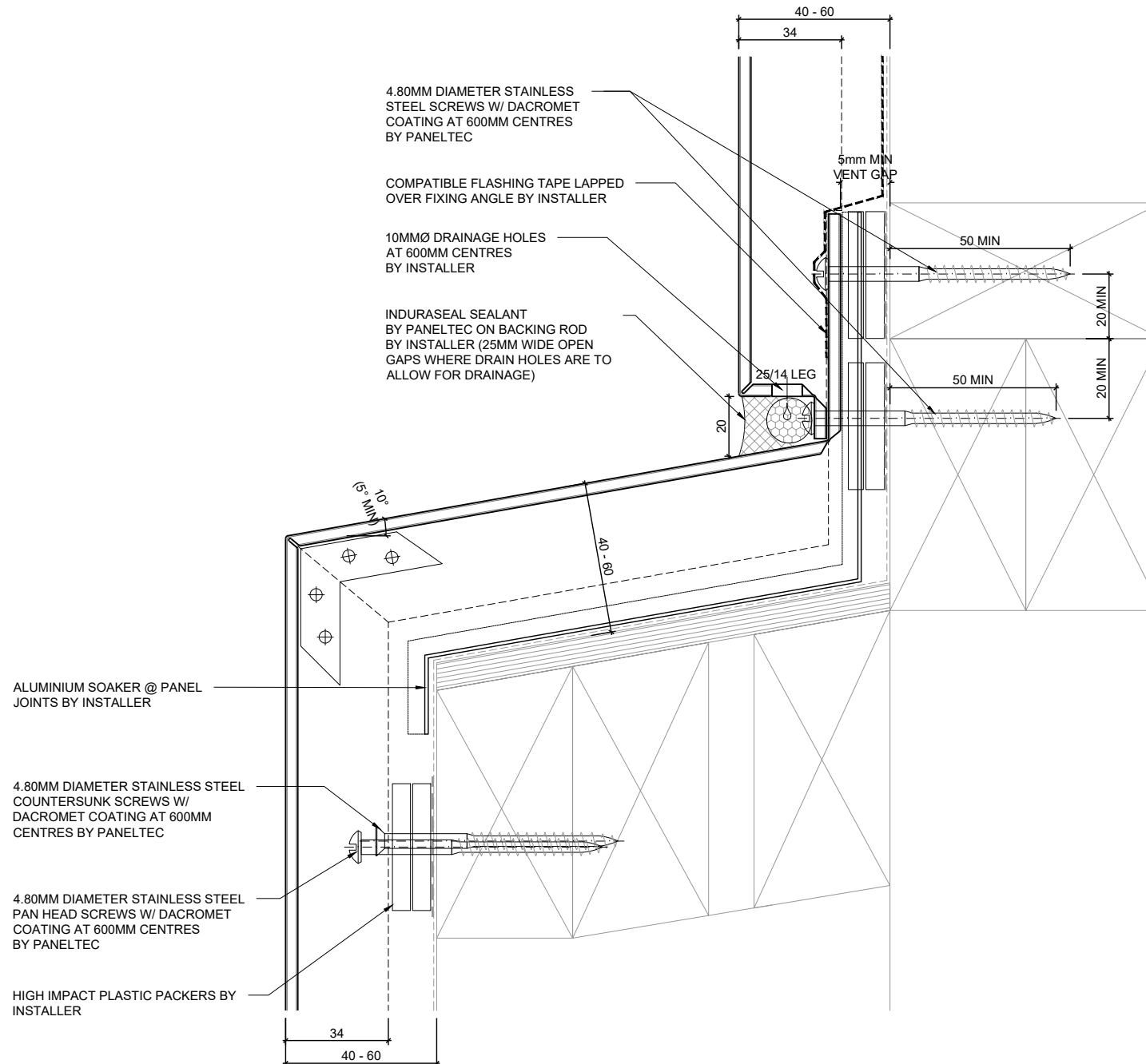
IMPORTANT NOTES:

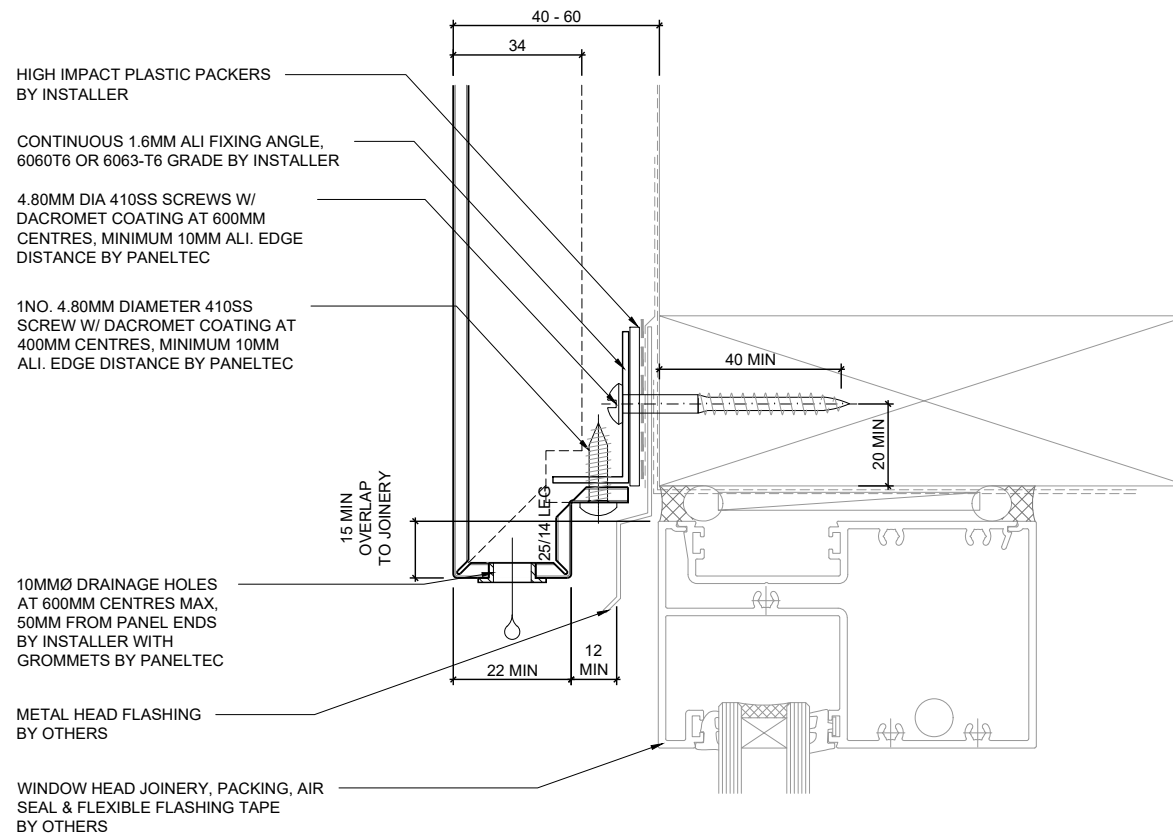
- RECOMMENDED TO HAVE THE PANEL BOTTOM SLOPING @1.5° TOWARDS THE SIDE WHERE THE DRAIN HOLE IS LOCATED TO AVOID RISK OF PONDING.

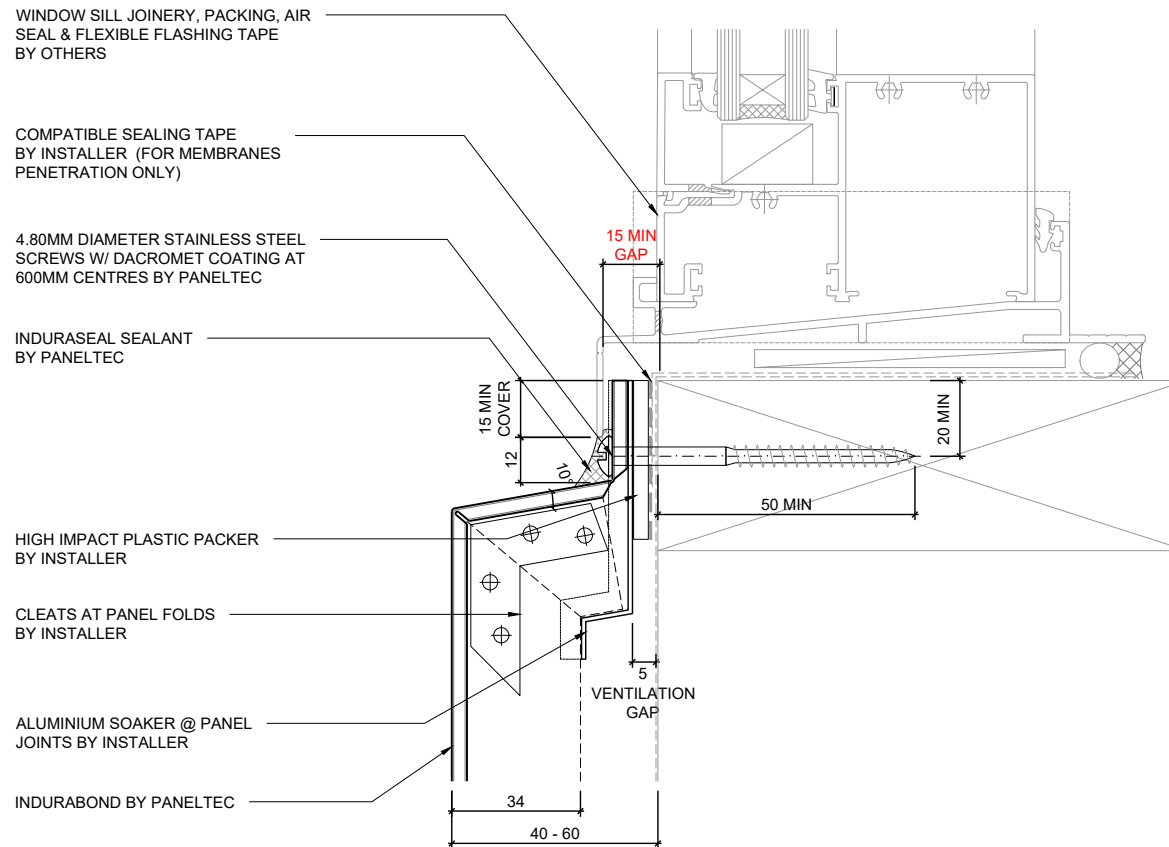


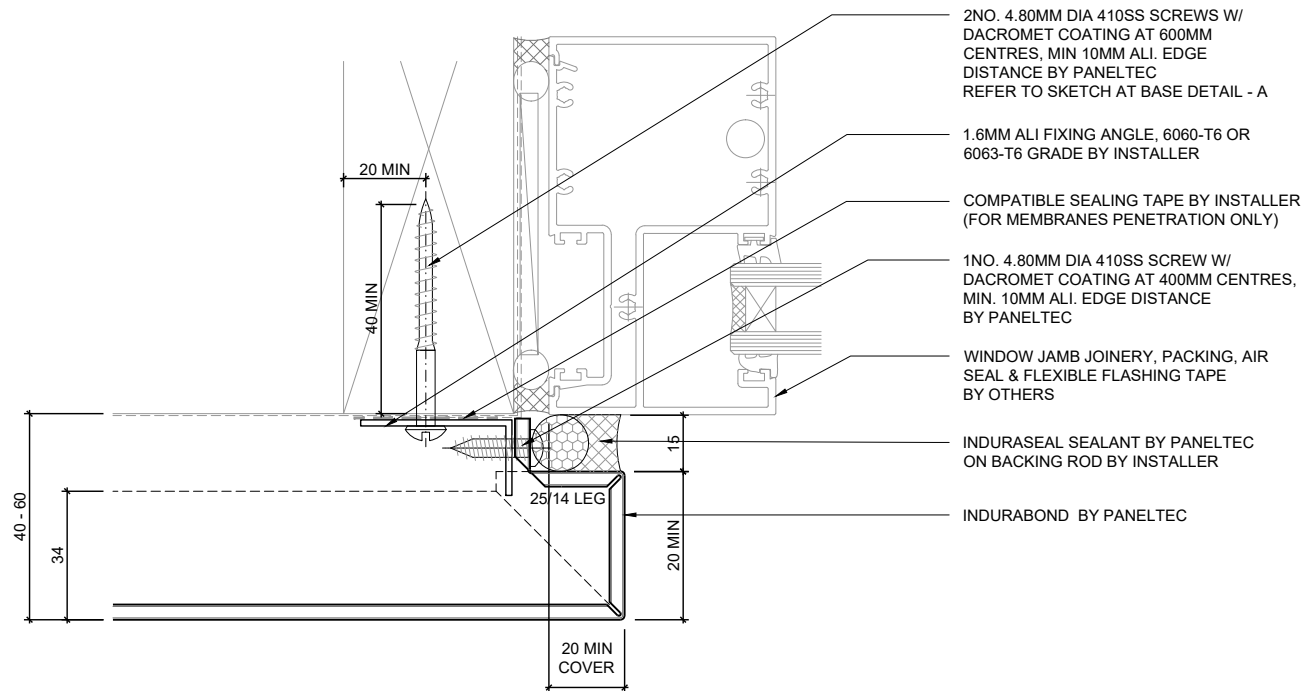


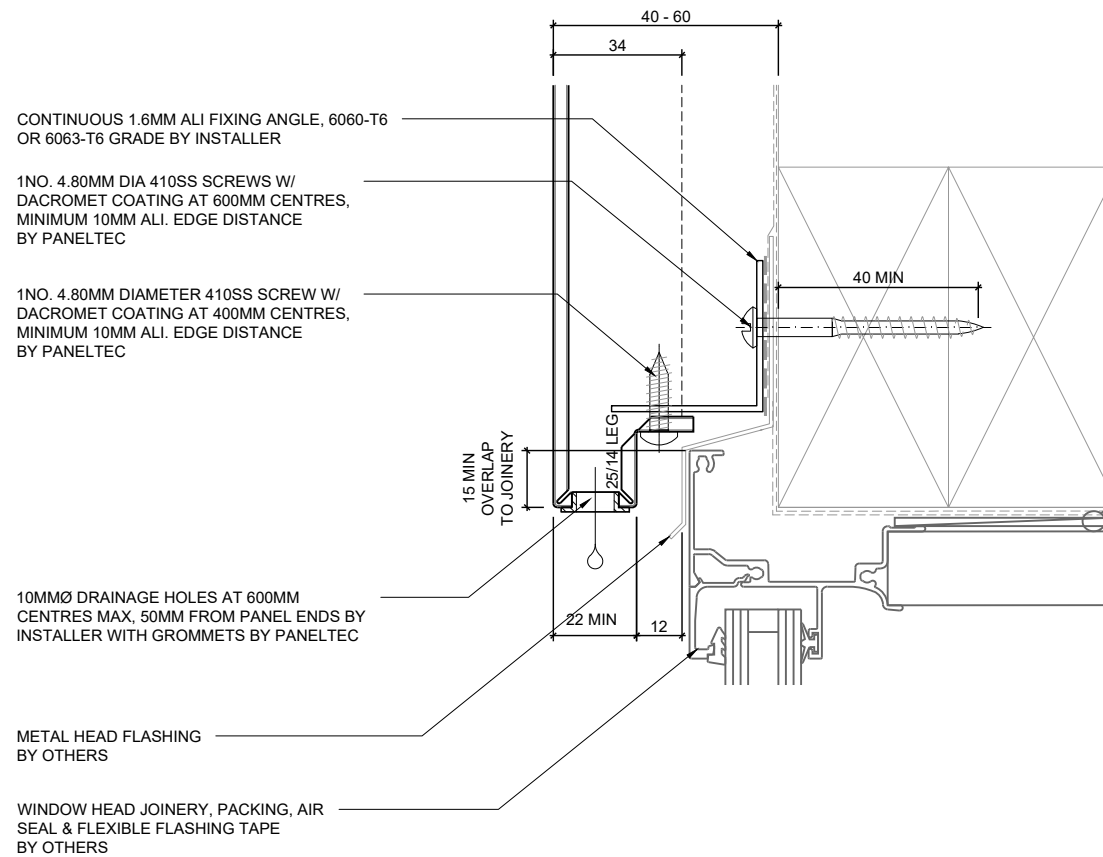


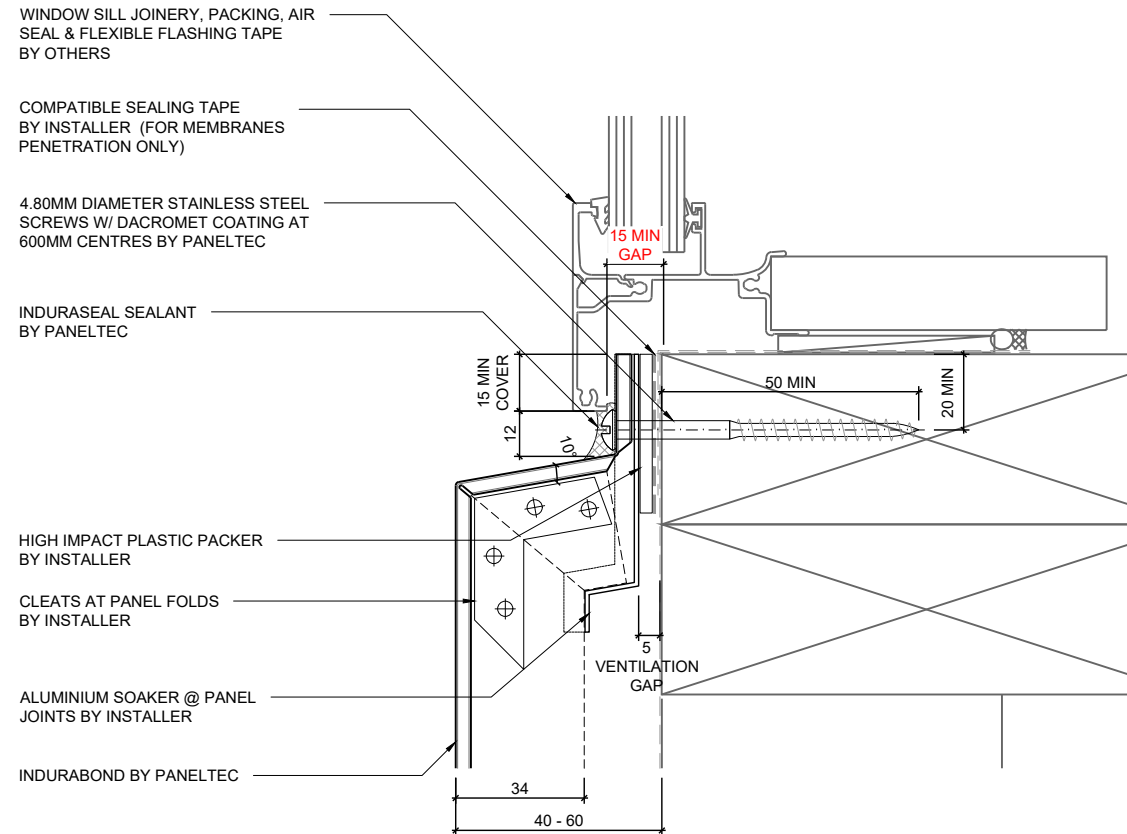




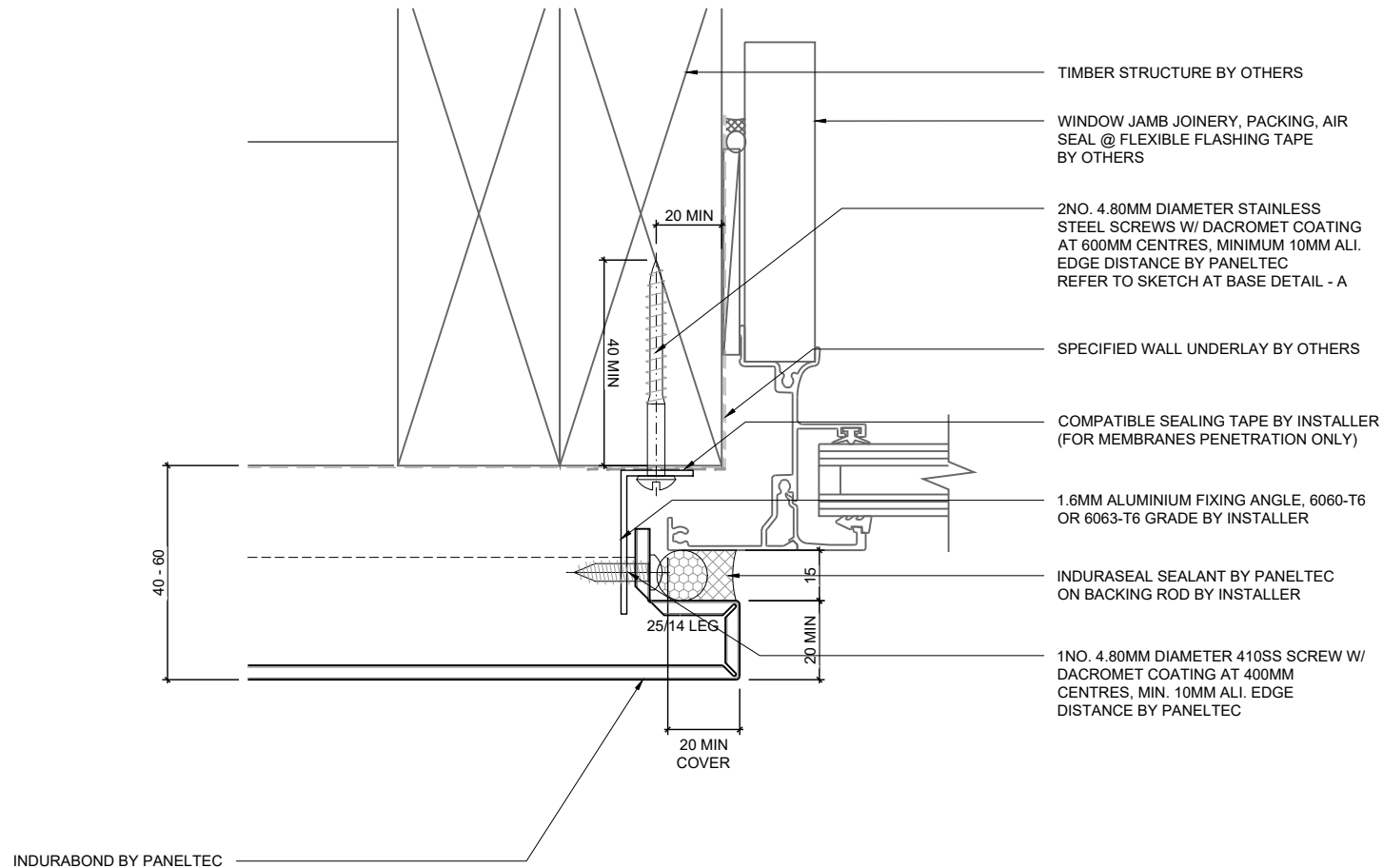


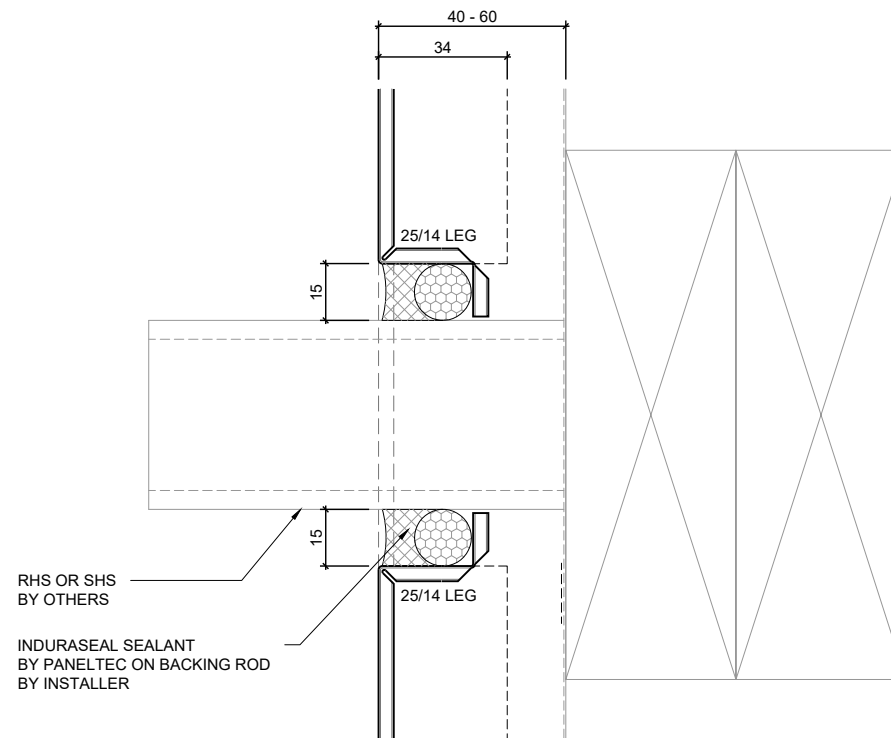


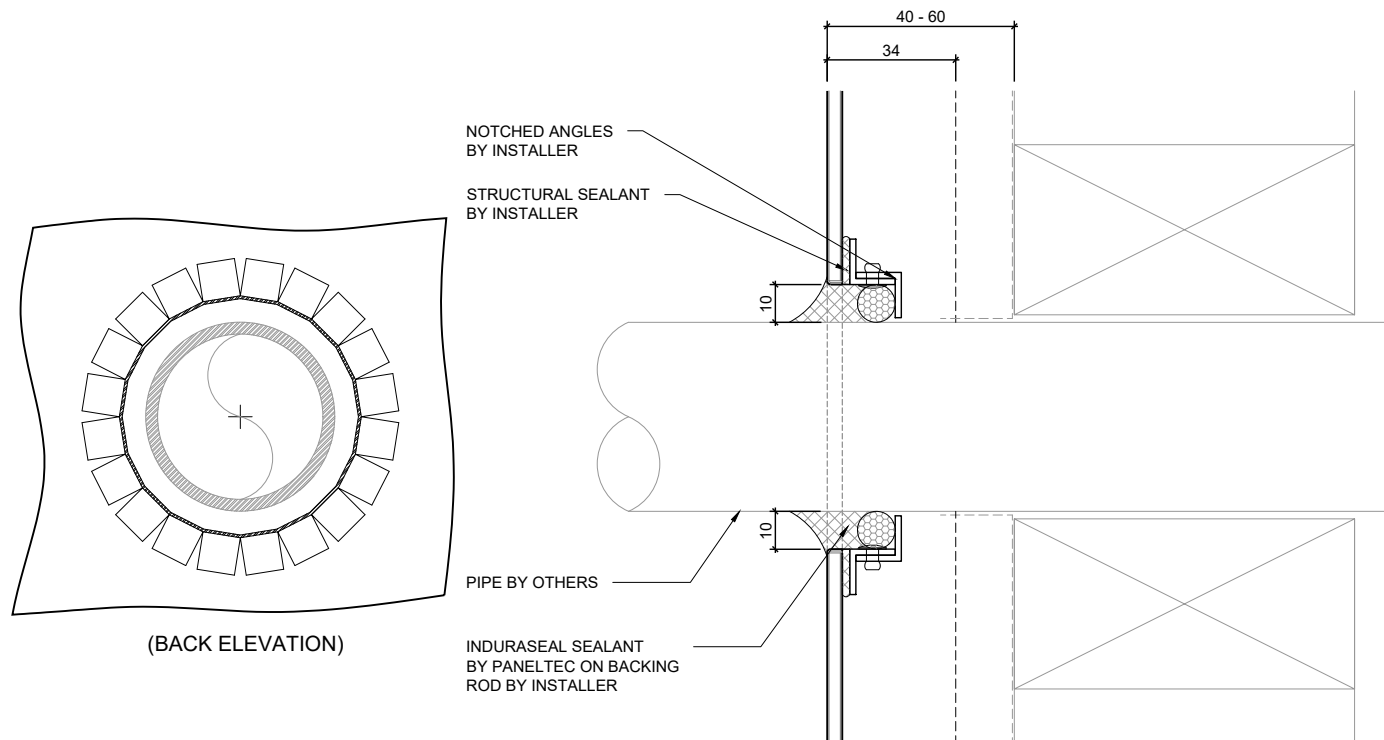


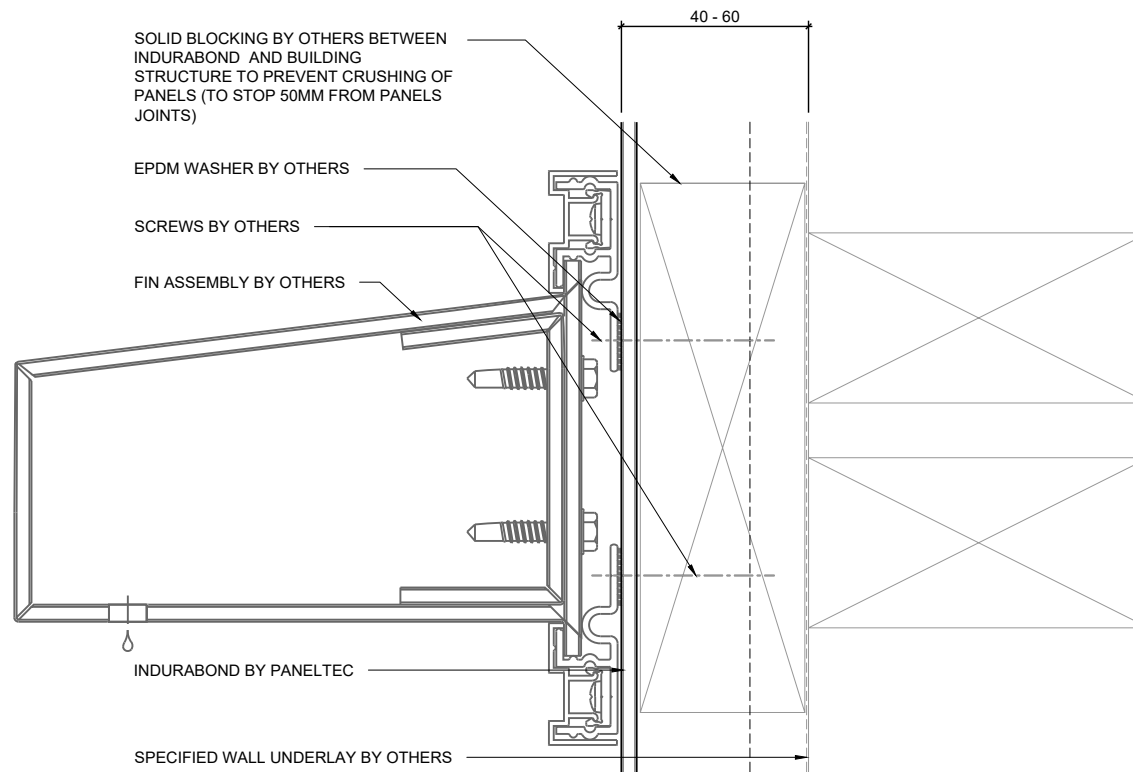


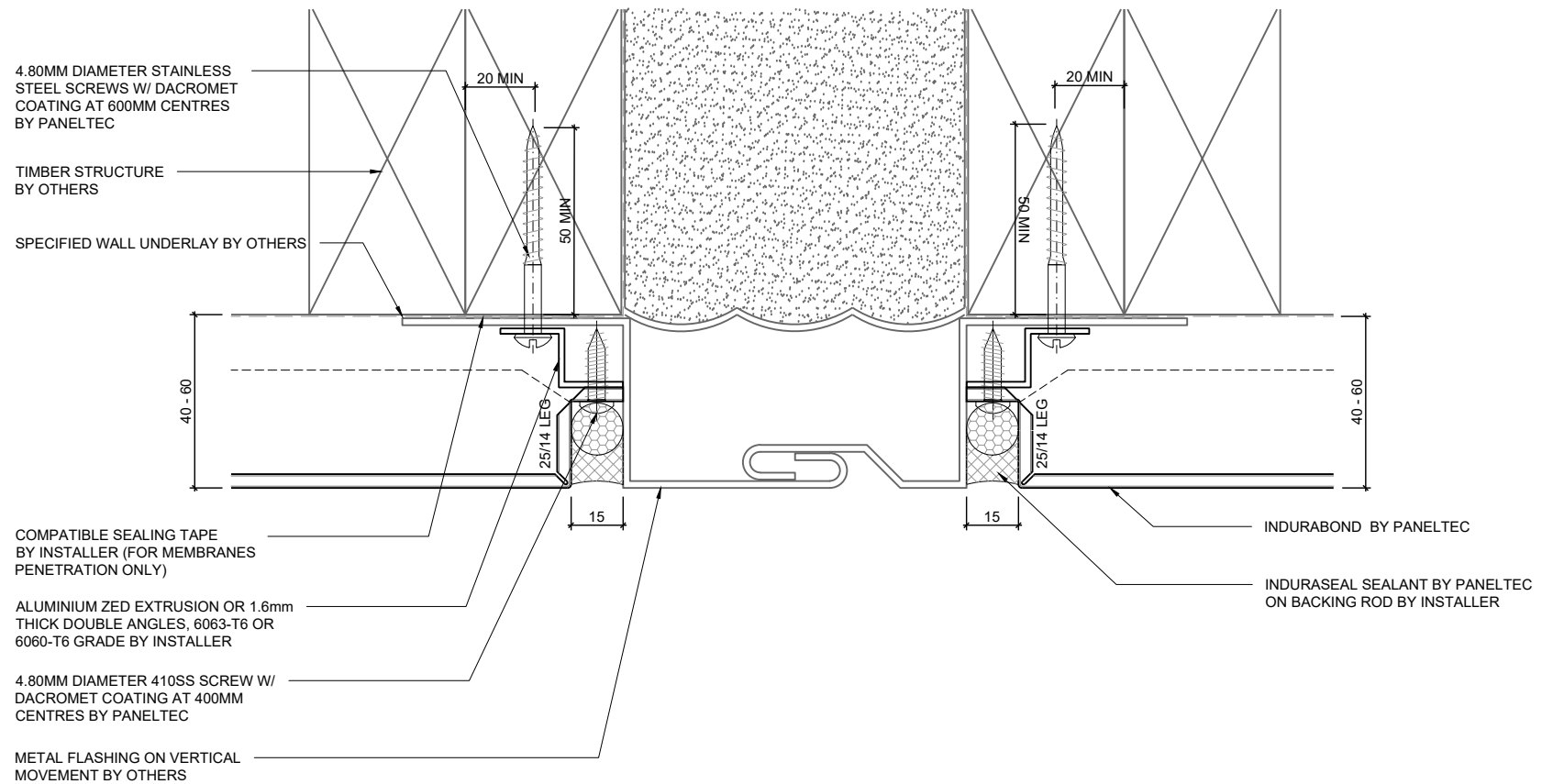


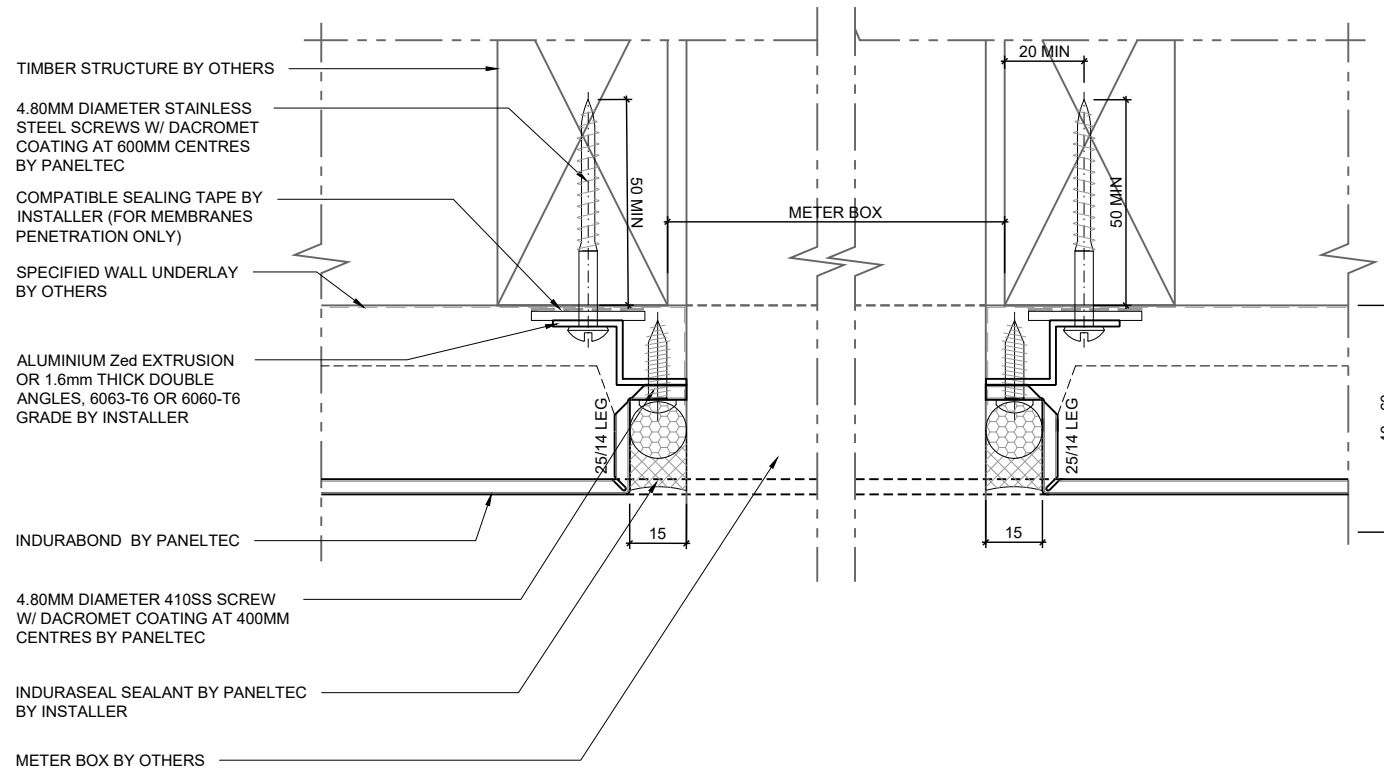


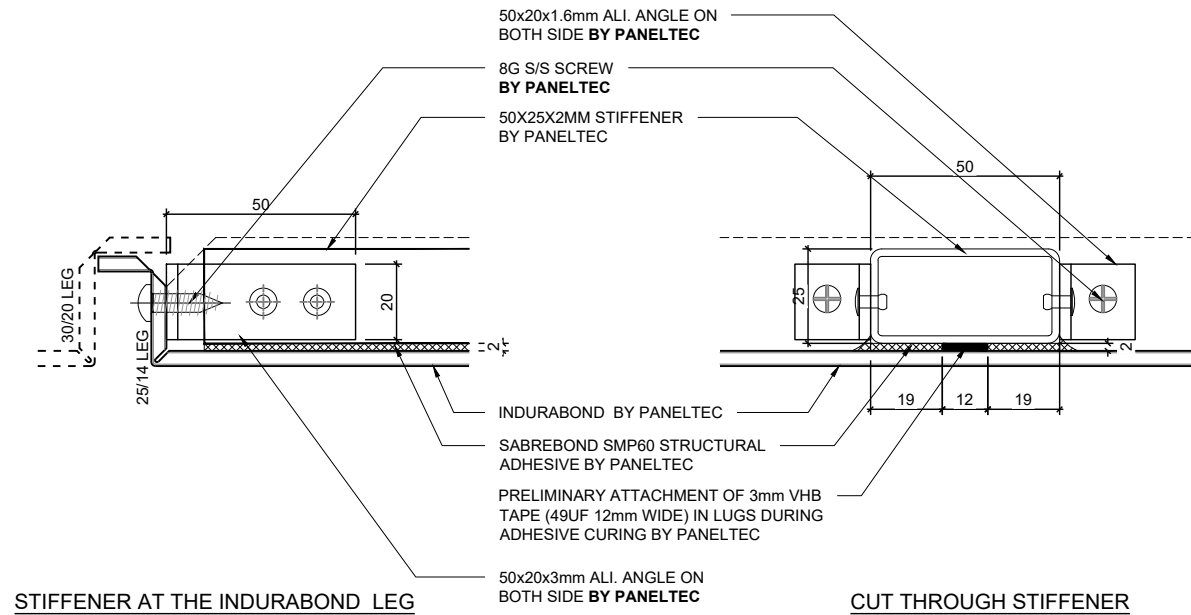
















**Auckland Office**  
5 Piermark Drive  
Rosedale  
Auckland 0632  
0508 726 358

**Head Office**  
10 Mako Street,  
Dargaville  
09 439 4357

[info@paneltec.co.nz](mailto:info@paneltec.co.nz)  
[www.paneltec.co.nz](http://www.paneltec.co.nz)

